

2301/486 Pacific Highway St Leonards, NSW



A luxury one bedroom plus study apartment in the heart of St Leonards offers ups

Situated on level 23, this luxurious 1 bedroom plus study apartment provides an ultra-convenient lifestyle and five-star resort facilities. Spacious open-plan living areas flow onto a large entertainer's balcony with the iconic Sydney harbour view. In the heart of St Leonards, this home is just five kilometres from Sydney CBD.

Apartment Features:

- * Open-plan living and dining area with a generous ceiling height
- * Modern island kitchen with stone benchtop and built-in Miele appliances
- * Well-appointed bedroom with built-in wardrobes
- * Private study room, perfect for home office and visitors
- * Luxurious bathroom with plenty of storage
- * Internal laundry with dryer included

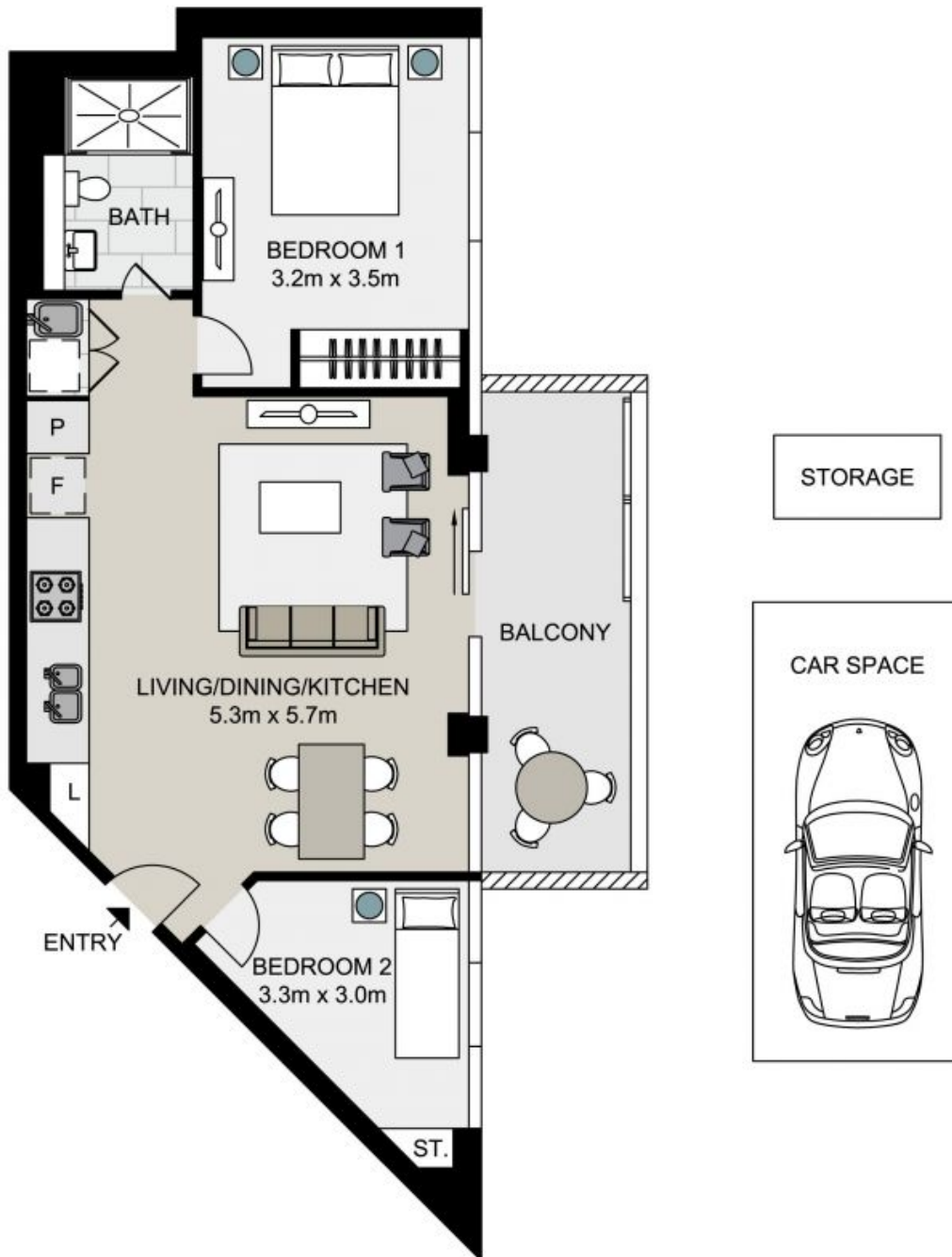
Contact Agent

Inspect : Wednesday, 22nd May 2024 12:00 - 1:00
Type : Unit
Land : 89 m2
Building Size : 68 m2

Council Rates : \$373.00 p/q
Water Rates : \$219.47 p/q
Strata Rates : \$1,170.69 p/q

Jeffrey Li
 0404 135 763

Sue Tsui
 0455141685



2301/486 Pacific Highway, ST LEONARDS

Not to scale . Measurements are approximate . Drawn For Marketing purposes only .