



601/567 Pacific Highway St Leonards, NSW



## Exceptional Modern Residential Apartment

Located in the boutique "Northern Light" complex with only 28 apartments, this apartment boasts quality finishes and a modern-style living experience. Situated close to the proposed Crows Nest metro rail services and St Leonards Station, it offers easy access to transportation. Step outside to discover a diverse range of cafes and restaurants, with Crows Nest Village just a short stroll away.

Key features include:

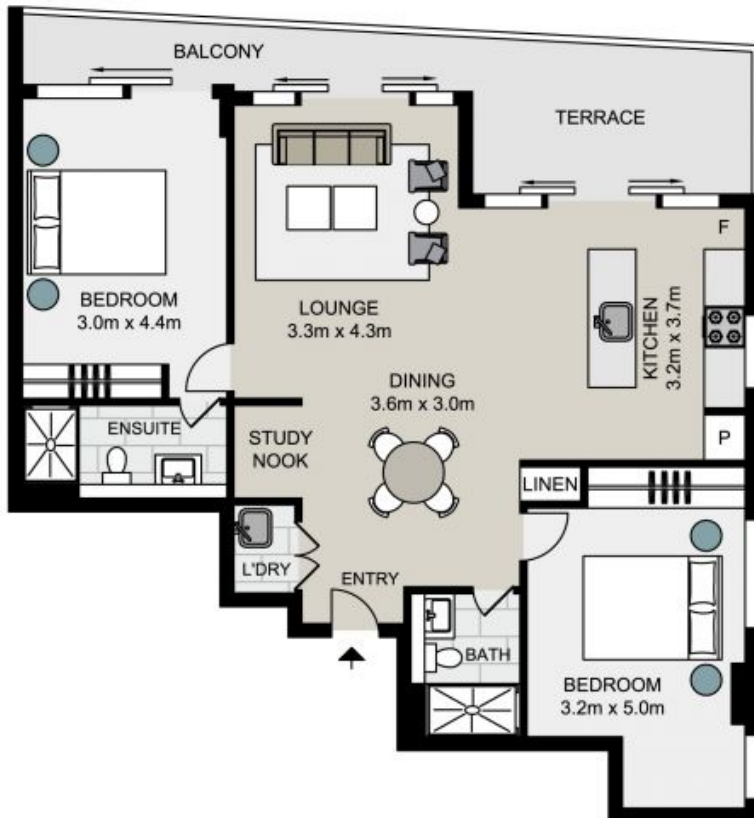
- Open-plan layout featuring spacious living and dining areas
- Contemporary kitchen equipped with a dishwasher, stainless steel appliances, and gas cooking facilities
- Stylishly designed bedrooms and modern bathrooms
- Sun-filled balcony perfect for relaxation

**\$950 pw**

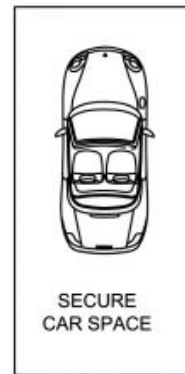
**Type** : Apartment  
**Date Available** : Monday, 13th May 2024  
**Land** : 112 m2  
**Building Size** : 97 m2

**Faye Dai**  
 0423 677 160

**Tiffany Or**  
 0455582288



Total Living Area: 97 sqm  
 Total Strata Area: 112 sqm



## 601/567 Pacific Highway, St Leonards

Not to scale . Measurements are approximate . Drawn For Marketing purposes only .

