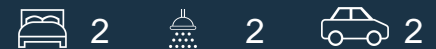




1907/472 Pacific Highway St Leonards, NSW



Experience opulent living in this North facing two-bedroom Mirvac apartment with

Designed for immaculate contemporary living and open plan in/outdoor entertaining, this high level northeast facing apartment boasts enviable resort-style living in the 'St Leonards Square' building. Quality appointments ensure there's nothing to spend and everything to enjoy. The building promotes an active lifestyle with a shared indoor lap pool, gym, spa, sauna, function rooms and terrace.

Home Features:

- * Rare two separate car parking on title and storage
- * Open plan kitchen, living/dining flow to covered balcony
- * Stone bench tops and gas stainless steel Miele appliances
- * Generous bedrooms with built-in robes, one with an ensuite
- * Stylish fully tiled bathrooms

Contact Agent

Inspect : Saturday, 18th May 2024 11:30 - 12:00
Type : Unit
Land : 115 m2
Building Size : 115 m2

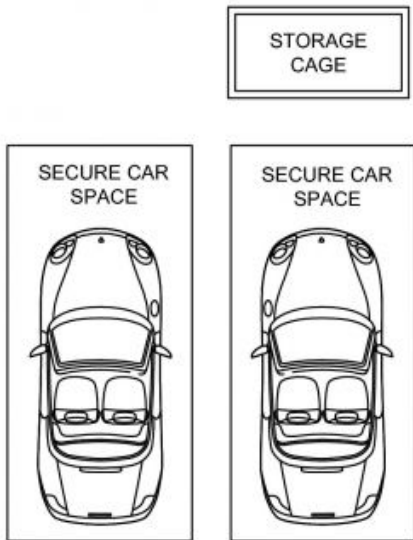
Council Rates : \$373.00 p/q
Water Rates : \$278.21 p/q
Strata Rates : \$1,868.25 p/q

Jeffrey Li

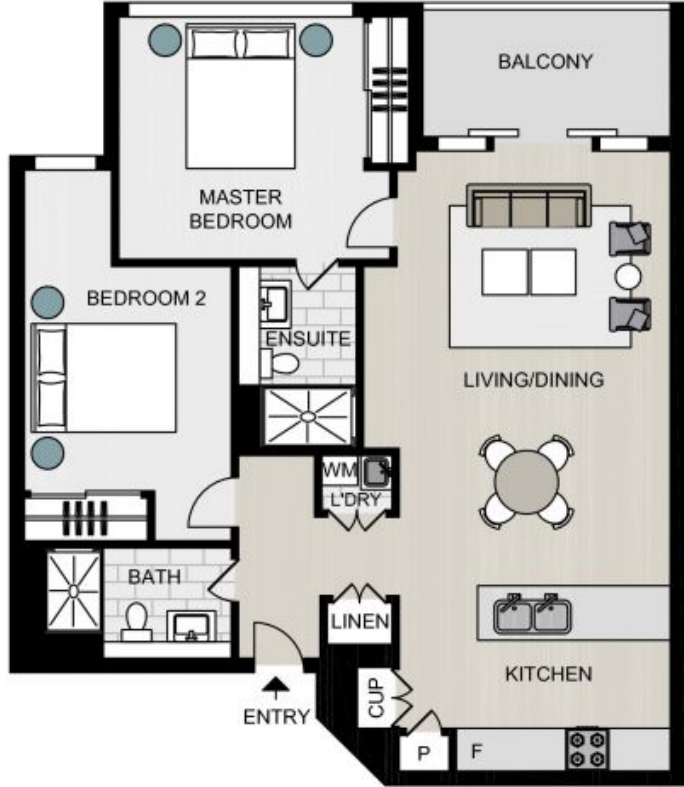
0404 135 763

Sue Tsui

0455141685



Strata area: 115 sqm
 Living area: 84 sqm



1907/472 Pacific Highway, ST LEONARDS

NORTH



Not to scale . Measurements are approximate . Drawn For Marketing purposes only .