



2302/472 Pacific Highway St Leonards, NSW

 3
  2
  2

Spacious Three-Bedroom Apartment Featuring Stunning City Views | MIRVAC

St. Leonards Square embodies Mirvac's renowned reputation for upscale living in Sydney. Offering exceptional amenities, stunning harbor and city vistas, and a lively ground-floor plaza, this development stands as an iconic landmark set to define St. Leonards for generations to come.

This three-bedroom apartment, nestled within one of Sydney's most sought-after Mirvac buildings on the Lower North Shore, stands as a pinnacle of luxury living, marking one of the highest-tier 3-bedroom residences ever released for sale in this building

Highlighted features include:

- Expansive open-plan living space offering panoramic views stretching from the Harbour Br

Contact Agent

Auction : Saturday, 25th May 2024
Details : On Site at 2:00pm
Type : Unit
Land : 161 m2
Building Size : 128 m2

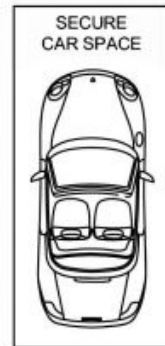
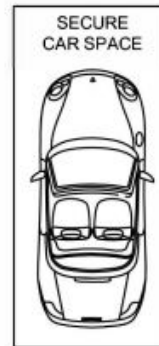
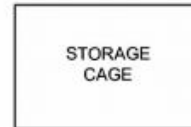
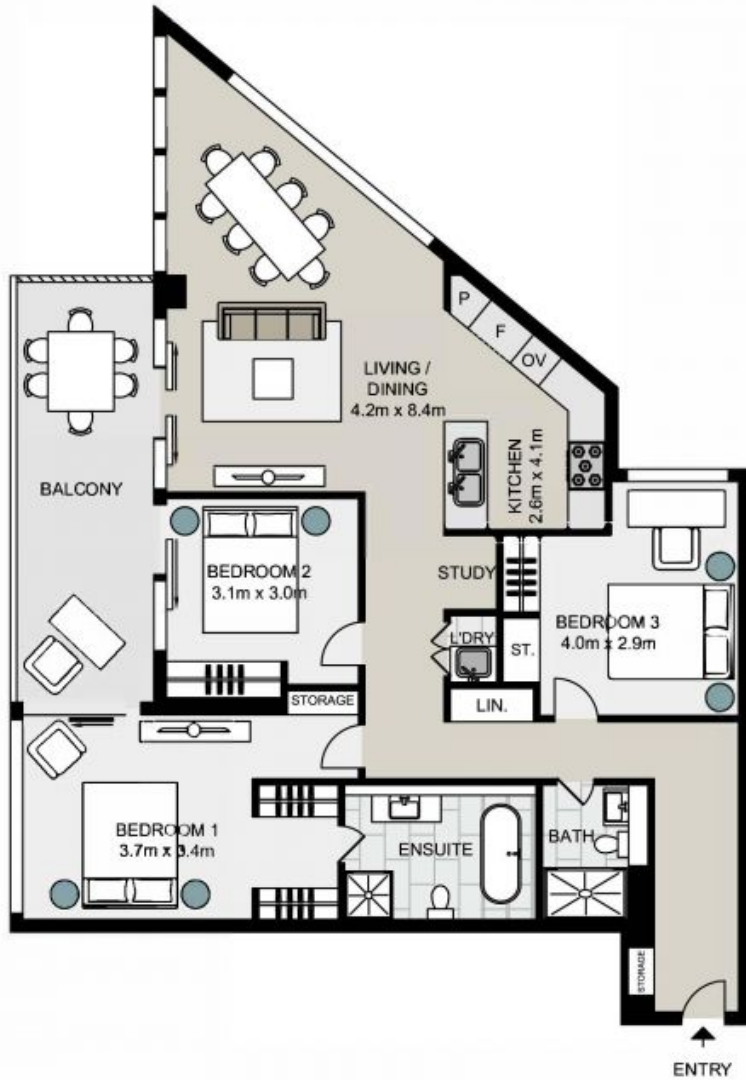
Council Rates : \$373.00 p/q
Water Rates : \$222.14 p/q
Strata Rates : \$2,968.05 p/q

Jeffrey Li

0404 135 763

Faye Dai

0423 677 160



Strata Area: 161 sqm
Living Area: 128 sqm

2302/472 Pacific Highway, ST LEONARDS

Not to scale . Measurements are approximate . Drawn For Marketing purposes only .

