



1502/486 Pacific Highway St Leonards, NSW



3



2



2

Luxury Living in This Three Bedroom Mirvac Apartment

St Leonards Square exemplifies Mirvac's reputation for sophisticated living in Sydney. With superb amenities, exceptional harbour and city views and a vibrant ground floor plaza, this is an iconic destination that will define St Leonards for years to come.

Features include:

- Open-plan living with views all the way to Harbour Bridge and the Blue Mountains
- Dark colour scheme Gourmet kitchen with feature tinted mirror splashback and premium Miele appliances including five gas cooktops, Meile dishwasher and ovens
- Full-height glazing to maximise views and capture natural light in the apartment
- Excellent storage including built-in wardrobes and additional external storage
- Two car parking spaces and storage
- Excellent location, just 5km from the Sydney CBD and close to leading schools, universit

Contact Agent

Type : Apartment
Land : 160 m2
Building Size : 128 m2

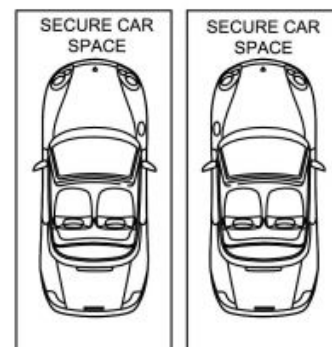
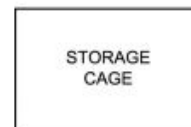
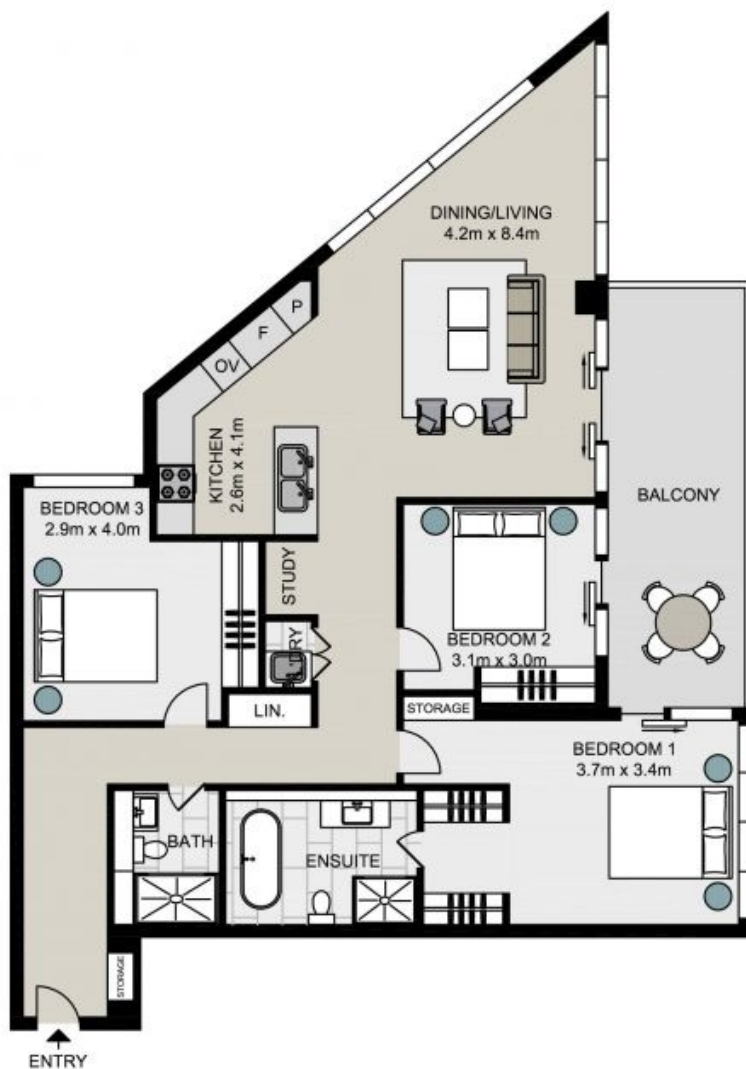
Council Rates : \$373.00 p/q
Water Rates : \$208.79 p/q
Strata Rates : \$2,206.75 p/q

Jeffrey Li

0404 135 763

Jeffrey Li

0404 135 763



Total living area: 128sqm
Total strata area: 160sqm

1502/486 Pacific Highway, ST LEONARDS

Not to scale . Measurements are approximate . Drawn For Marketing purposes only .

