



806/486 Pacific Highway St Leonards, NSW

 2
  2
  1

Harbour facing two bedroom in Mirvac built complex

With breath-taking vistas spanning Sydney Harbour and the CBD, this apartment epitomizes sophisticated living within the esteemed 'St Leonards Square' complex. Experience pure indulgence with floor-to-ceiling windows, a flexible floor plan, and sweeping panoramas of Sydney Harbour and its environs.

- Bedrooms feature built-in wardrobes for added convenience
- Open-plan living and dining area boasts generous ceiling height
- Modern island kitchen equipped with stone benchtops and high-end Miele appliances
- Luxurious bathrooms offer ample storage and include a bathtub in the ensuite
- Internal laundry comes complete with a dryer for added convenience

There are 29 visitor spaces, 14 car-share spaces, and 18 electronic car charging bays. Res

Contact Agent

Inspect : Saturday, 18th May 2024 12:00 - 12:30
Type : Apartment
Land : 106 m2
Building Size : 89 m2

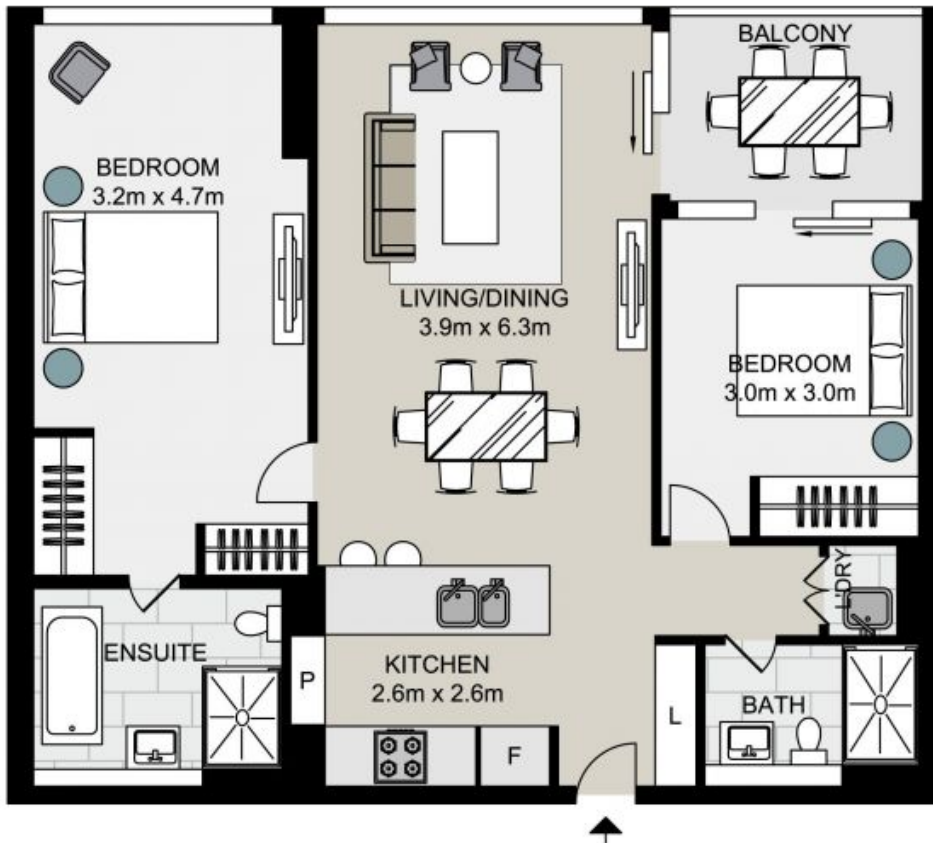
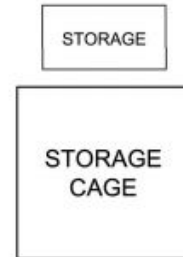
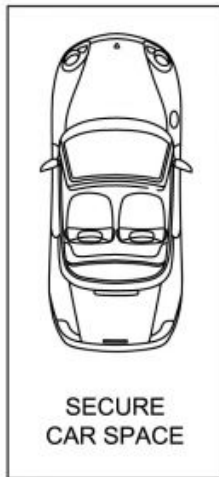
Council Rates : \$376.20 p/q
Water Rates : \$211.46 p/q
Strata Rates : \$1,370.57 p/q

Jeffrey Li

0404 135 763

Byron Davies

0424564266



TOTAL STRATA AREA: 106sqm
TOTAL LIVING AREA: 89sqm

806/486 Pacific Highway, ST LEONARDS

Not to scale . Measurements are approximate . Drawn For Marketing purposes only .

