



2207B/80 Waterloo Road Macquarie Park, NSW



2



2



2

Spectacular Penthouse Level 2 Bedroom Apartment with Breathtaking Harbour Bridge

"Park One" is a superb collection of premier parkside residences positioned in the true heart of Macquarie Park. This luxury contemporary apartment offers the absolute ideal living spaces, perfect for the professional couples, downsizers, or the young family. Apartment 2207B offers a top-floor oasis with breathtaking vistas of iconic Sydney Harbour.

Home features:

- Open plan living and dining with floor to ceiling windows
- Modern kitchen with breakfast island & Miele appliances
- 2 balconies access from living room and master bedroom
- Contemporary bathrooms, internal laundry, ducted A/C

Contact Agent

Inspect : Thursday, 2nd May 2024 9:30 - 10:00
 Saturday, 4th May 2024 9:30 - 10:00

Type : Apartment

Land : 113 m2

Building Size : 85 m2

Council Rates : \$337.00 p/q

Water Rates : \$195.44 p/q

Strata Rates : \$1,193.28 p/q

Jeffrey Li

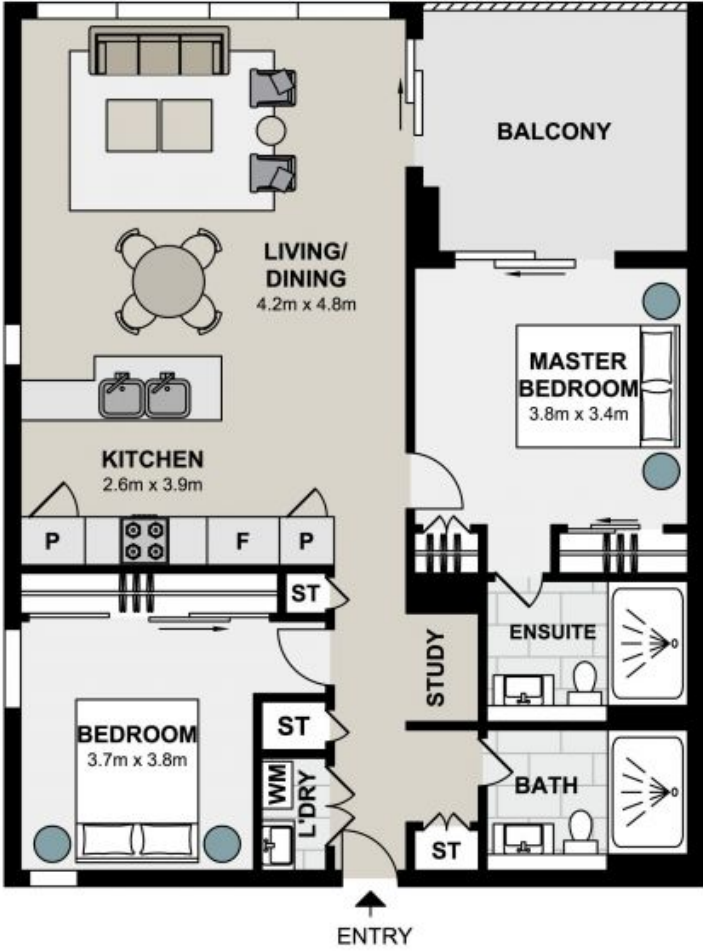
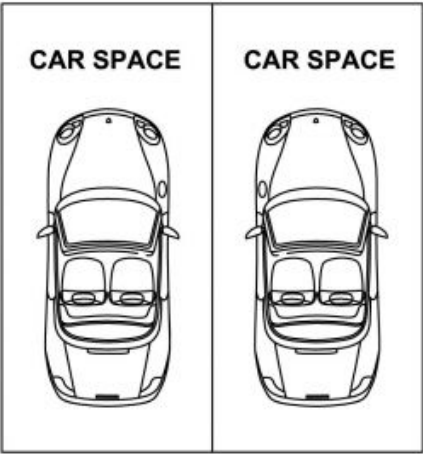
0404 135 763

Jeffrey Li

0404 135 763

TOTAL LIVING AREA: 85sqm
TOTAL STRATA AREA: 113sqm

STORAGE
CAGE



2207B/80 Waterloo Road, Macquarie Park

Not to scale . Measurements are approximate . Drawn For Marketing purposes only .

