

3007/88A Christie Street St Leonards, NSW

 2
  2
  1

Luxury 2 bedroom unit with High Level and Great location

This immaculate residence of quality has been built to perfection. This apartment enjoys unparalleled views, take in the Sydney Harbour Bridge and Sydney harbour view in one magical sweep.

Clever enhancements add to its beauty and liveability.

- Built in Cabinetry with Belgium" Oak" colour schemes
- Superbly designed by award winning-architects PTW
- Spacious open plan living and dining
- Beautiful balcony offering easy-indoor/outdoor-living
- Luxurious stone island bench with stone splash-back -Integrated Fisher and Paykel fridge/freezer and Miele appliances
- Generous pantry huge island bench-designer kitchen tap-ware and bathroom ware
- Resort-style roof top garden and Gym

Contact Agent

Inspect : Saturday, 4th May 2024 2:00 - 2:30
Type : Apartment
Land : 117 m2
Building Size : 98 m2

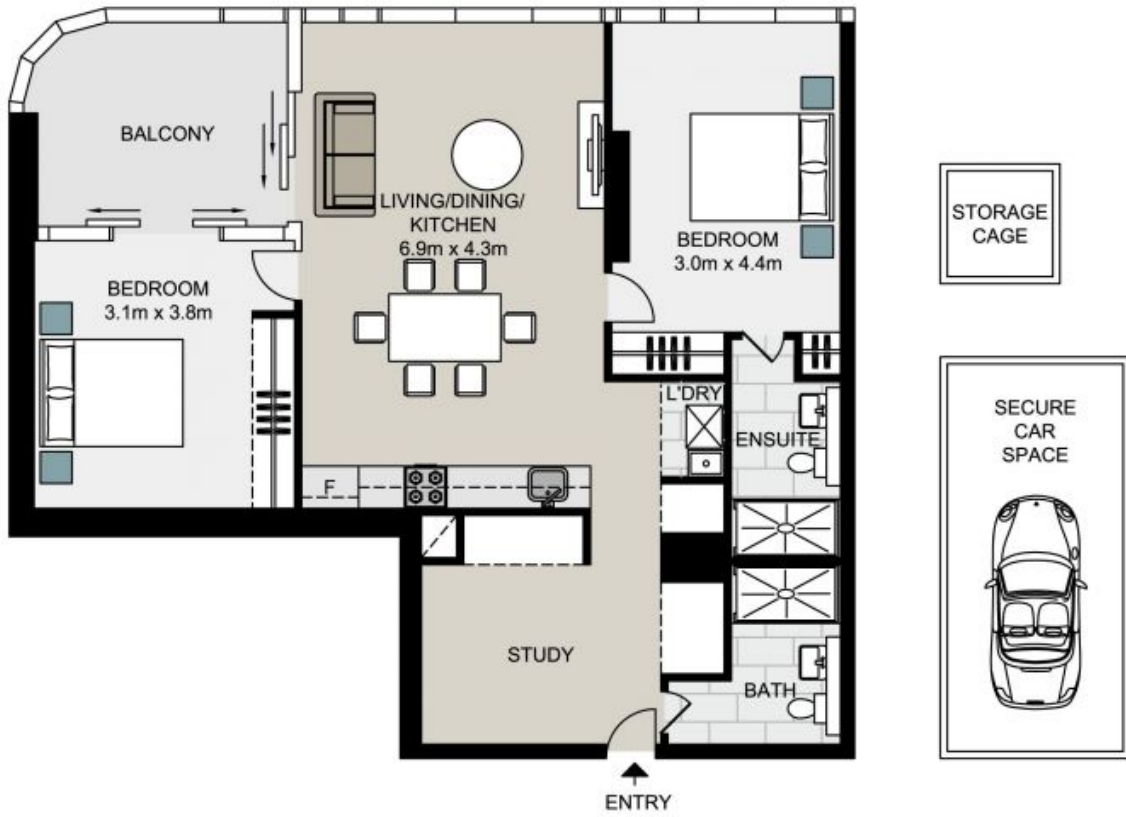
Council Rates : \$373.00 p/q
Water Rates : \$158.00 p/q
Strata Rates : \$1,636.80 p/q

Jeffrey Li

0404 135 763

Byron Davies

0424564266



TOTAL STRATA AREA: 117m²
TOTAL LIVING AREA: 98m²

3007/88A Christie Street, ST LEONARDS

Not to scale . Measurements are approximate . Drawn For Marketing purposes only .

