






5700/500 Pacific Highway St Leonards, NSW

 4
  4
  3

## The Grand Sydney - Landmark Penthouse

Welcome to the Grand Sydney at the distinguished St. Leonard's landmark. Boasting four bedrooms, four bathrooms, and breath-taking panoramic harbour vistas, this residence epitomizes perfection.

With its graceful curves and remarkable views, it stands out as one of the most remarkable penthouses ever encountered. Spanning 377 square meters, it offers absolute opulence, where each window frames an endless expanse of Harbour against the iconic city skyline. Despite its vastness, the sprawling floor plan exudes an intimate, welcoming atmosphere, complemented by impeccable finishes.

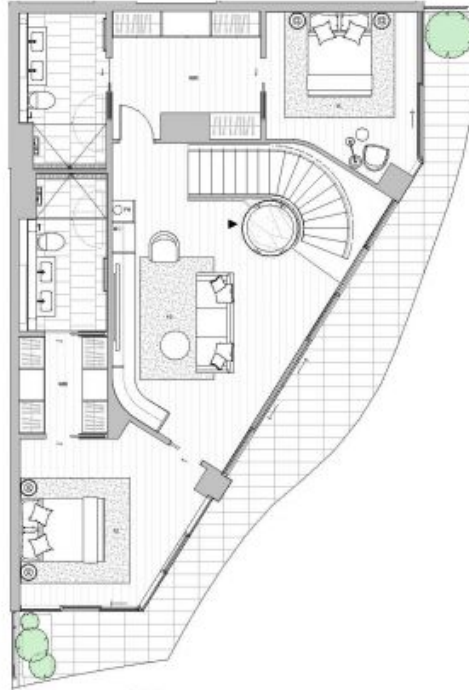
The gourmet marble kitchen features Gaggenau appliances, integrated Sub-Zero fridges, and a zip-tap delivering filtered water and sparkling water. Ascend via the glass lift or the curved staircase to the second level, revealing a luxurious sky-lit living area opening to wrap-around terraces. The faultless floor plan, meticulously designed by the architects, ensures that every bedroom and living space showcases breath-taking views. Three of the fo

**Type** : Apartment  
**Land** : 427 m2  
**Building Size** : 364 m2

**Council Rates** : \$360.00 p/q  
**Water Rates** : \$159.00 p/q  
**Strata Rates** : \$5,525.00 p/q

**Jeffrey Li**  
 0404 135 763

**Faye Dai**  
 0423 677 160



楼上

LEVEL 2 FLOOR PLAN

1/10



楼下

LEVEL 1 FLOOR PLAN

1/10

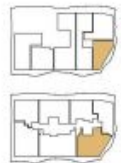
SKYHOME 6 - GRAND SYDNEY PENTHOUSE

Internal Area: 253 m<sup>2</sup> 室内面积  
External Area: 71 m<sup>2</sup> 室外面积

LEVEL 1  
Grand Sky Penthouse  
253m<sup>2</sup> x 71m<sup>2</sup>  
Living & Reception  
43m<sup>2</sup> x 43m<sup>2</sup>  
Large Formal Lounge  
23m<sup>2</sup> x 30m<sup>2</sup>  
Bedroom  
12m<sup>2</sup> x 20m<sup>2</sup>  
Master Bed with Walk-in-Closet & Ensuite  
43m<sup>2</sup> x 16.5m<sup>2</sup>  
Bathroom  
23m<sup>2</sup> x 43m<sup>2</sup>

LEVEL 2  
Bedroom 2 with Walk-in-Closet & Ensuite  
7.2m<sup>2</sup> x 12m<sup>2</sup>  
Bathroom 2 with Walk-in-Closet & Ensuite  
4.3m<sup>2</sup> x 12.5m<sup>2</sup>  
Pantry Room  
3.8m<sup>2</sup> x 10m<sup>2</sup>

FR: Balcony  
TC: Terrace  
RFP: Reception  
TV: Living  
F: Dining  
LP: Lounge  
BT: Balcony  
B: Bathroom  
MB: Master Bedroom  
MBC: Master Bedroom/Closet/Ensuite  
BC: Bedroom/Closet  
MC: Master Bedroom/Closet  
CC: Kitchen/Closet  
ST: Stair  
K: Kitchen  
TS: Top Terrace  
BT: Balcony



*Signature*