



601/567 Pacific Highway St Leonards, NSW



2



2



1

Exceptional Modern Residential Apartment

Located in the boutique "Northern Light" complex with only 28 apartments, this apartment boasts quality finishes and a modern-style living experience. Situated close to the proposed Crows Nest metro rail services and St Leonards Station, it offers easy access to transportation. Step outside to discover a diverse range of cafes and restaurants, with Crows Nest Village just a short stroll away.

Key features include:

- Open-plan layout featuring spacious living and dining areas
- Contemporary kitchen equipped with a dishwasher, stainless steel appliances, and gas cooking facilities
- Stylishly designed bedrooms and modern bathrooms
- Sun-filled balcony perfect for relaxation

Contact Agent

Type : Apartment
Land : 112 m2
Building Size : 97 m2

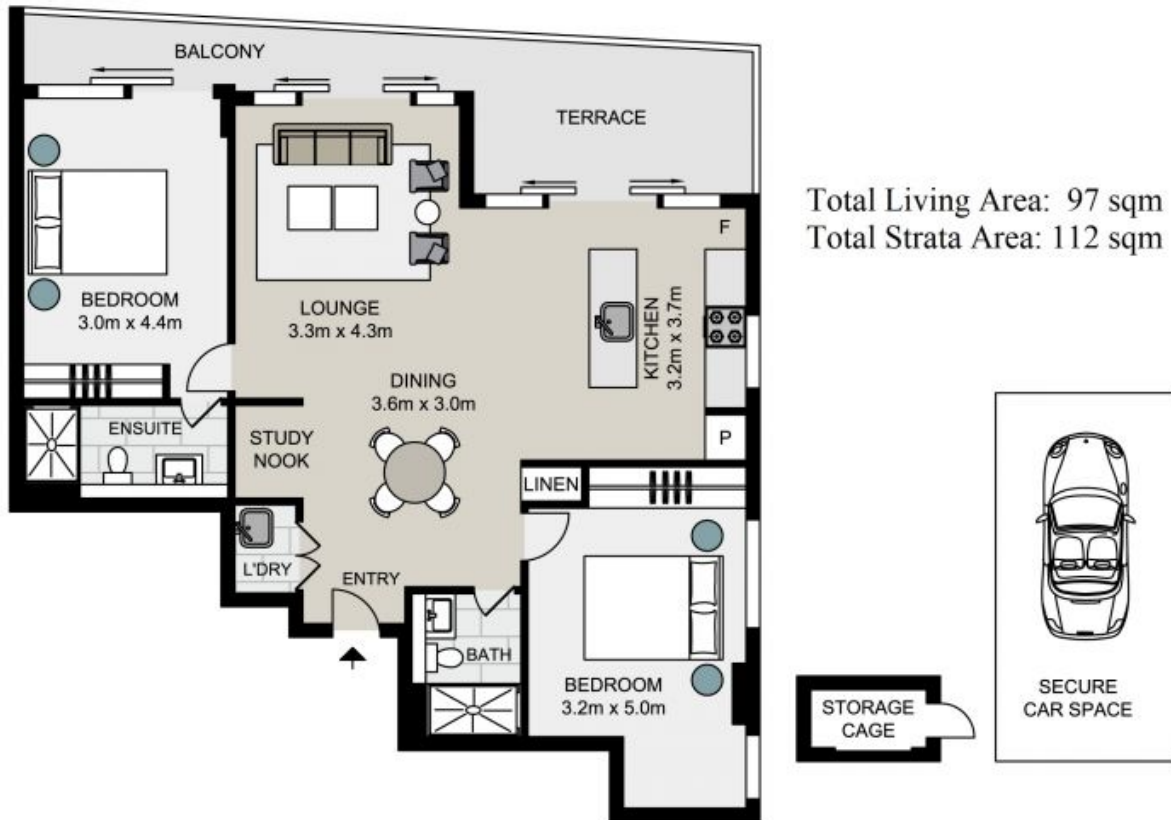
Council Rates : \$302.00 p/q
Water Rates : \$157.00 p/q
Strata Rates : \$1,365.00 p/q

Jeffrey Li

0404 135 763

Byron Davies

0424564266



601/567 Pacific Highway, St Leonards

Not to scale . Measurements are approximate . Drawn For Marketing purposes only .

