

1003/500 Pacific Highway St Leonards, NSW



1



1

Fully furnished 1 Bed Luxury Apartment

The Landmark St Leonards will be located at 500 Pacific Highway and will become the tallest tower in the revitalised St Leonards. The suburb of St Leonards is evolving from an inner-city commercial hub to a mixed-use, cosmopolitan epicentre.

The building features ground-floor retail and cafe space, whilst residents will be spoiled with the hotel styled amenities including, style entrance lobby, concierge, pool + spa, gym, yoga room, virtual golf range, business lounge, library and lounge room, private dining room with cooking facilities and universal hire rooms- ideal for kids music practice or holding a function.

- 1 bed | 1 bath |
- Luxuriously appointed and finished to the highest standards
- integrated Miele gas appliances
- Well-sized bedrooms with BIR

LEASED \$900 pw

Type : Apartment

Date Available : Thursday, 2nd May 2024

Tiffany Or

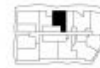
0455582288



- F Fridge
- L Laundry
- P Pantry
- ST Storage
- W Wardrobe

- | | |
|----------------|------------------------|
| Apartment Type | 1 Bedroom + Media/Desk |
| Bathroom | 1 |
| Internal | 6.95* |
| External | 16.65* |
| Parking | - |

THE LANDMARK



One Bed Apartment Type B

Sculpted from Sydney

Disclaimer: Colliers International does not guarantee, warrant or represent that the information contained in this advertising and marketing document is correct. Any interested parties should make their own enquiries as to the accuracy of the information. We exclude all implied or implied terms, conditions and warranties arising out of this document and any liability for loss or damage arising there from.