



2105/150 Pacific Highway North Sydney, NSW



3



2



2

Three-Bedroom sub penthouse with functional study

This stunning residence at the Polaris building epitomizes refined luxury living, boasting breathtaking views from its elevated perch on the 21st floor. Crafted by the esteemed architects Allen Jack+Cottier, this residence seamlessly blends radiant interiors with elegant living spaces.

This exceptional apartment offers:

- Three spacious bedrooms with built-in robes, complemented by a dedicated study room
- Two bathrooms, including a luxurious ensuite featuring a walk-in robe
- Eastern exposure ensuring abundant natural light throughout

Within walking distance to five of Sydney's premier educational institutions: North Sydney

Auction

Type : Apartment
Land : 155 m2
Building Size : 124 m2

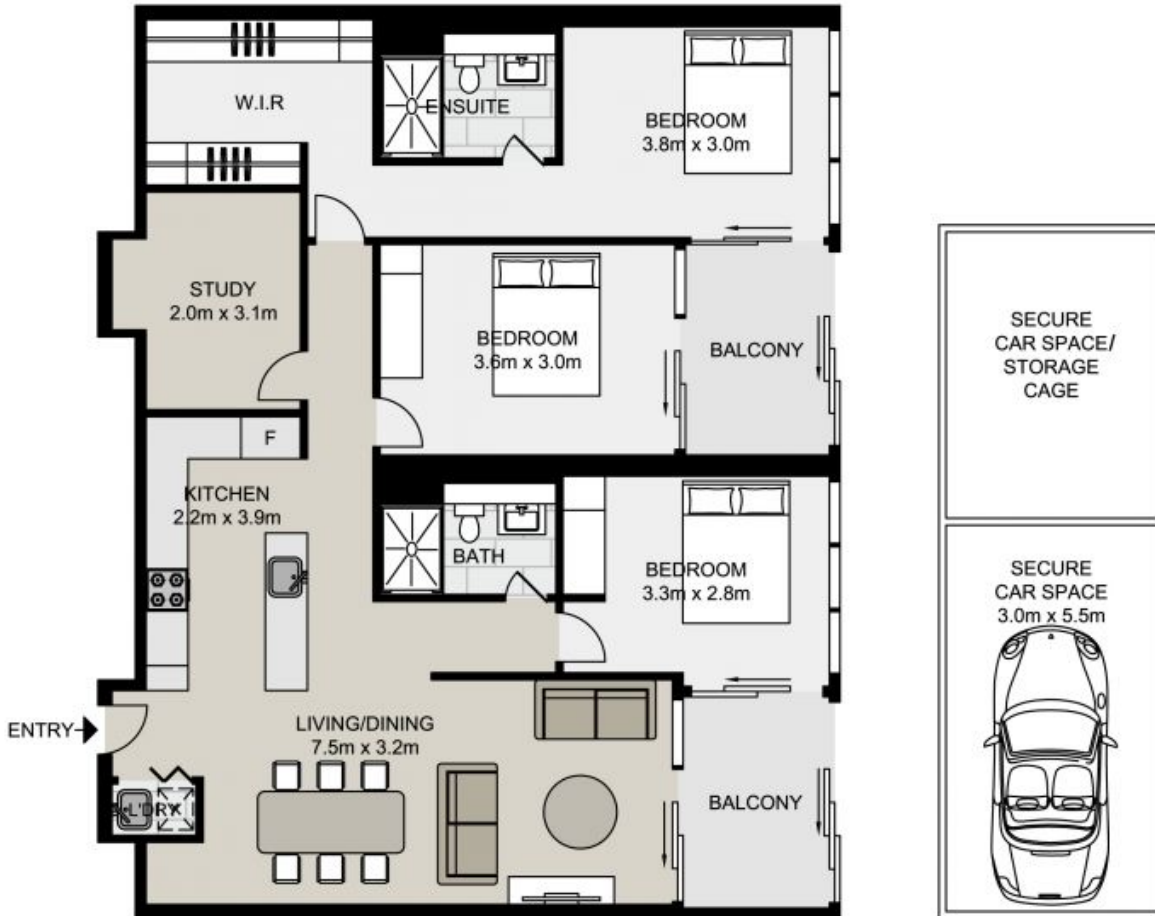
Council Rates : \$306.00 p/q
Water Rates : \$158.42 p/q
Strata Rates : \$2,583.90 p/q

Jeffrey Li

0404 135 763

Faye Dai

0423 677 160



Total strata area: 155sqm

Total living area: 124sqm

2105/150 Pacific Highway, NORTH SYDNEY

Not to scale . Measurements are approximate . Drawn For Marketing purposes only .

