



3101/500 Pacific Highway St Leonards, NSW



Spacious, Sunny and Luxurious in desirable 'Landmark' St Leonards

This stunning northwest-facing 2 bedroom apartment boasts breathtaking views of the tranquil North Shore waters and iconic Manly coastline. Situated on 31st floor, its living area is filled with natural light, leading to a wrap-around balcony where you can soak in the stunning scenery.

Home Features:

- North East and North west facing open plan living and dining area with access to the balcony
- Wrap around balcony in perfect corner position overlooking beautiful district views of Sydney Heads and sea

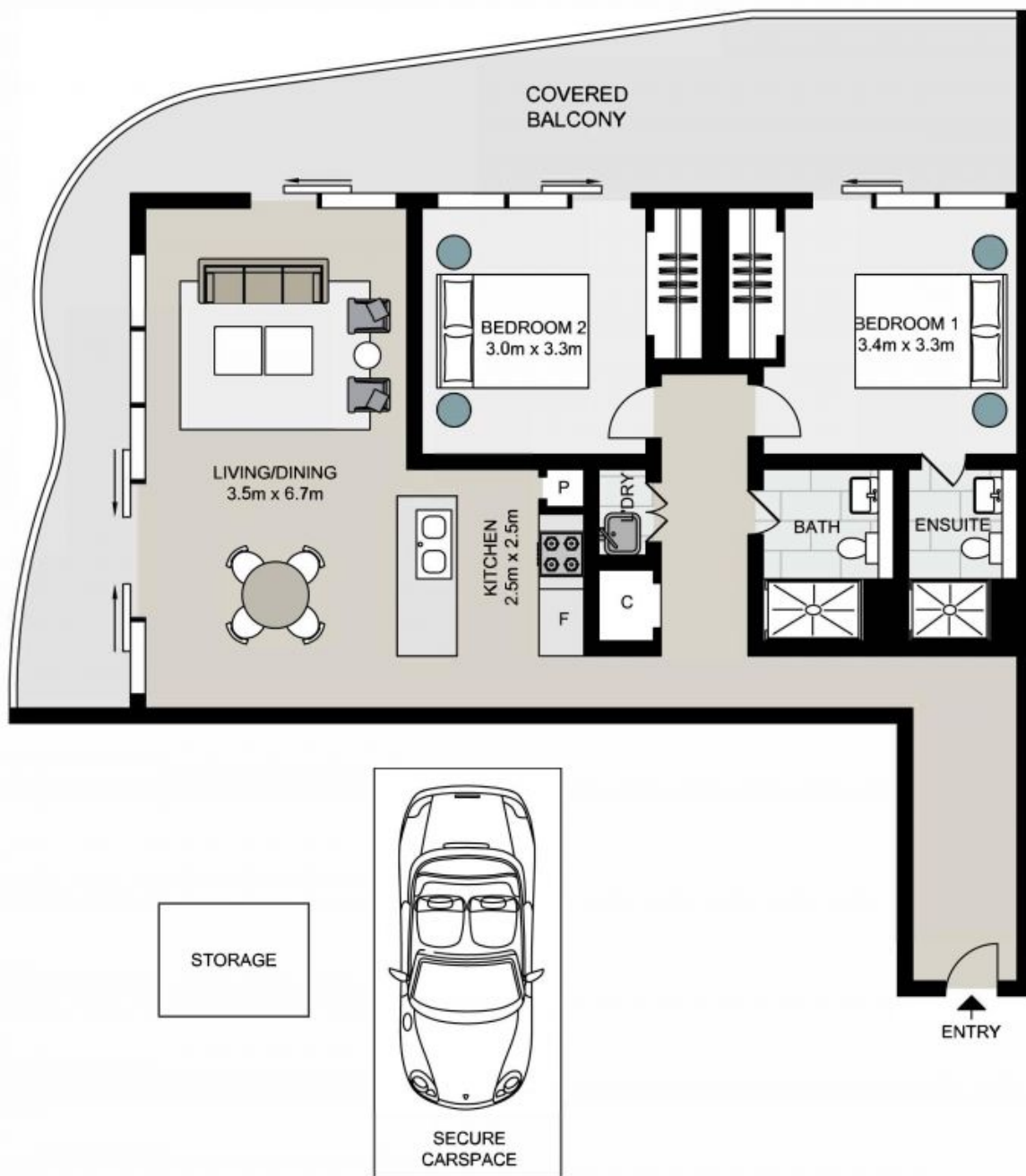
Contact Agent

Type : Apartment
Land : 136 m2
Building Size : 119 m2

Council Rates : \$376.70 p/q
Water Rates : \$172.00 p/q
Strata Rates : \$1,722.35 p/q

Jeffrey Li
 0404 135 763

Sue Tsui
 0455141685



Total strata area: 136sqm
Total living area: 119sqm

3101/500 Pacific Highway, ST. LEONARDS

Not to scale . Measurements are approximate . Drawn For Marketing purposes only .

