



3608/500 Pacific Highway St Leonards, NSW



Stunning 2-Bedroom Apartment with Breathtaking Sydney Harbour Views

Discover the epitome of luxury living in this exquisite 2-bedroom apartment boasting unparalleled views of the iconic Sydney Harbour. Step inside to find a spacious and meticulously designed interior featuring a large shower room, catering to both comfort and accessibility needs. The open-plan layout seamlessly integrates the living, dining, and kitchen areas, creating an inviting space for relaxation and entertainment.

Home Features:

- Amazing size internal & external living & dining areas

Contact Agent

Type : Apartment
Land : 143 m2
Building Size : 127 m2

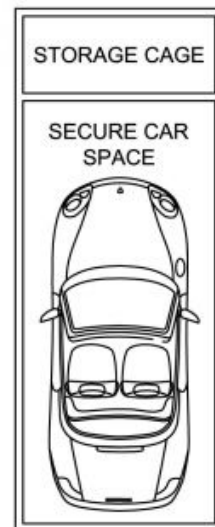
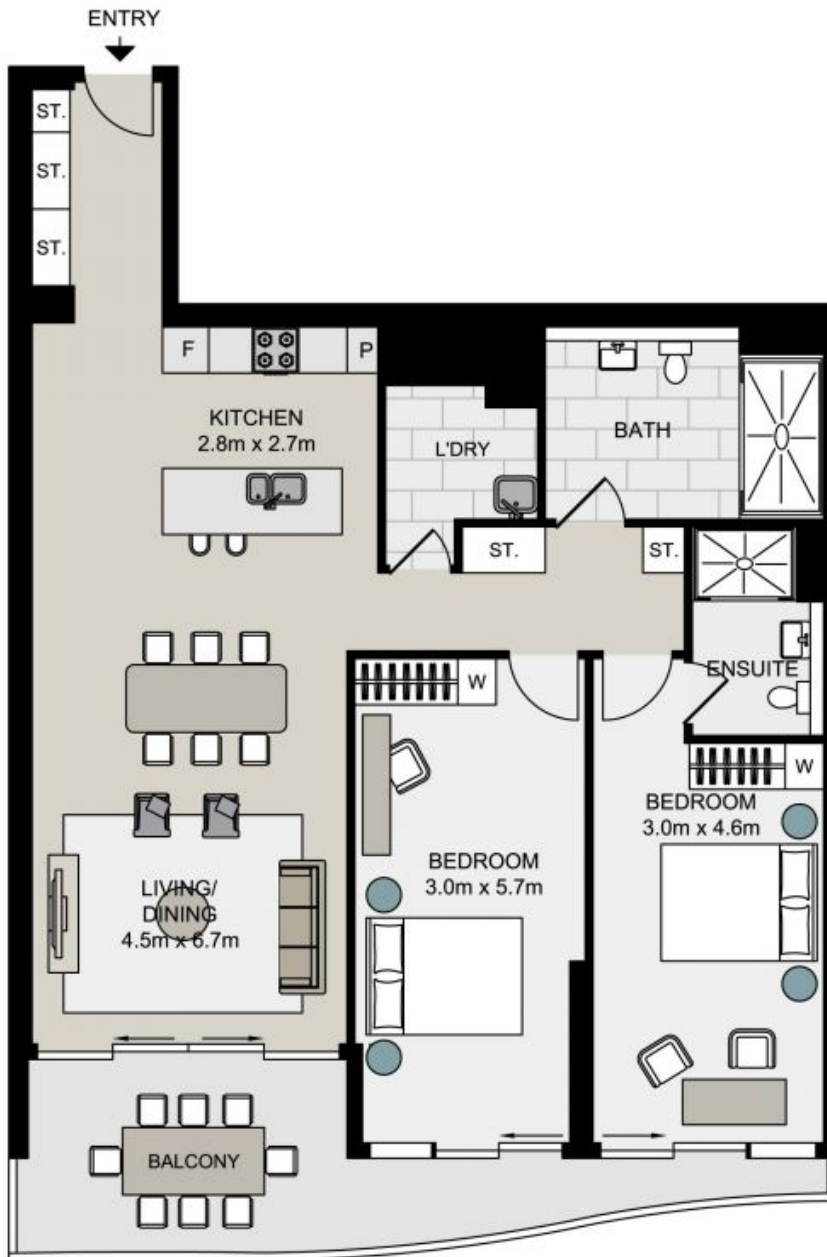
Council Rates : \$376.20 p/q
Water Rates : \$253.39 p/q
Strata Rates : \$2,376.45 p/q

Jeffrey Li

0404 135 763

Byron Davies

0424564266



TOTAL LIVING AREA: 127sqm
 TOTAL STRATA AREA: 143sqm

3608/500 Pacific Highway, St Leonards

Not to scale . Measurements are approximate . Drawn For Marketing purposes only .

