

3003/500 Pacific Highway St Leonards, NSW

 2
  2
  1

Luxury 2BED 2BATH 1PARKING - THE LANDMARK

Luxury 2BED PLUS FORMAL LOUNGE 2BATH 1PARKING

LEASED \$1400 pw

Type : Apartment

Date Available : Monday, 12th February 2024

A new Lifestyle, over 1,000m2 of amenities designed to enhance your living.

Luxurious residences with expansive entertaining spaces offering spectacular views stretching from Sydney Harbour across the North Shore to Middle Harbour.

Open floor plan and high-end finishes creating a modern look. Floor to ceiling thermal glass windows, large balconies, and kitted out kitchens with Miele appliances in spacious apartments with study/media areas.

Club 500, residents will enjoy an array of resort-style services and amenities.

? Lap pool

? Virtual Golf Range with 3 tournament virtual systems, equipped with lounge setting and b

Tiffany Or

0455582288

Faye Dai

0423 677 160

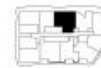


F Fridge
L Laundry
P Pantry
ST Storage
W Wardrobe

Apartment Type: 2 Bedrooms+Formal Lounge
Bathrooms: 2
Internal: 100 m²
External: 25 m²
Parking: 1

THE
LANDMARK

Sculpted from Sydney



Two Bed+Formal Lounge Apartment
Type A

Disclaimer: Colliers International does not guarantee, warrant or represent that the information contained in this advertising and marketing document is correct. Any interested parties should make their own enquiries as to the accuracy of this information. We exclude all implied or implied terms, conditions and warranties arising out of this document and any liability for loss or damage arising there from.