



5605/500 Pacific Highway St Leonards, NSW

 3
  3
  2

## Spectacular Sydney Harbour Views Await: Luxurious Sub-Penthouse Living in a High

Indulge in the epitome of luxury living with this stunning sub-penthouse nestled within the heights of an exclusive high-rise building overlooking the iconic Sydney Harbour. This meticulously designed residence offers a lifestyle of opulence, sophistication, and unparalleled panoramic views of Chatswood to Sydney Harbour.

### Home Features:

- \* Enormous space for living and entertaining
- \* One of the only two levels in the North-East corner of this complex with 270c views
- \* Stylishly concealed storage and extra size breakfast bar seating in the kitchen
- \* Miele induction cooktop, 90cm oven, integrated fridge and dishwasher

## Contact Agent

**Inspect** : Saturday, 11th May 2024 12:30 - 1:00  
**Auction** : Thursday, 23rd May 2024  
**Details** : On Site at 6:00pm  
**Type** : Apartment  
**Land** : 238 m2  
**Building Size** : 202 m2

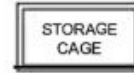
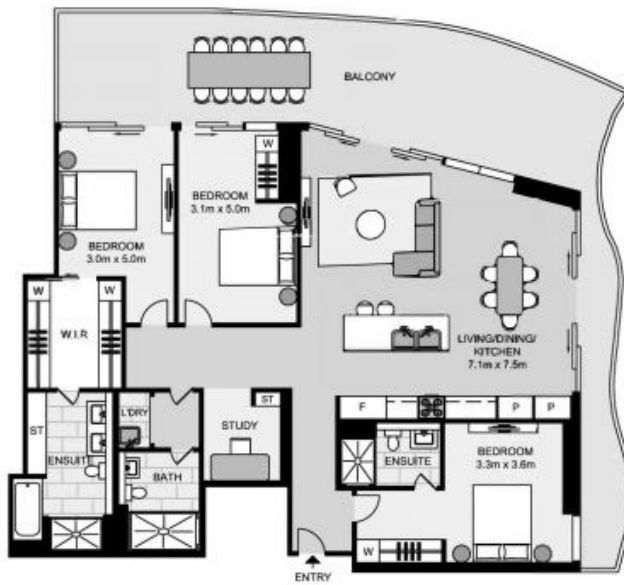
**Council Rates** : \$373.00 p/q  
**Water Rates** : \$158.45 p/q  
**Strata Rates** : \$3,912.55 p/q

**Jeffrey Li**

0404 135 763

**Faye Dai**

0423 677 160



## Subpenthouse 500 Pacific Highway, St Leonards

Not to scale . Measurements are approximate . Drawn For Marketing purposes only .

