

C801/2 Cowper Street Glebe, NSW

 3
  2
  1

## Stunning 3 Bedroom Garden View Apartment for Rent!

Mezzo's unrepeatable location, stunning city views and outstanding architecture provides the best of the city style and village lifestyle.

### Property Features:

- Absolute park front living with stunning Sydney City and Wentworth Park views
- Design by renowned award-winning architects CHROFI and KANFINCH
- Spectacular roof top terrace garden with expansive City, Harbour and Parkland views
- Close walk to Sydney University, University of Technology Sydney (UTS) Notre Dame University & many local schools
- Sun filled North-facing apartment

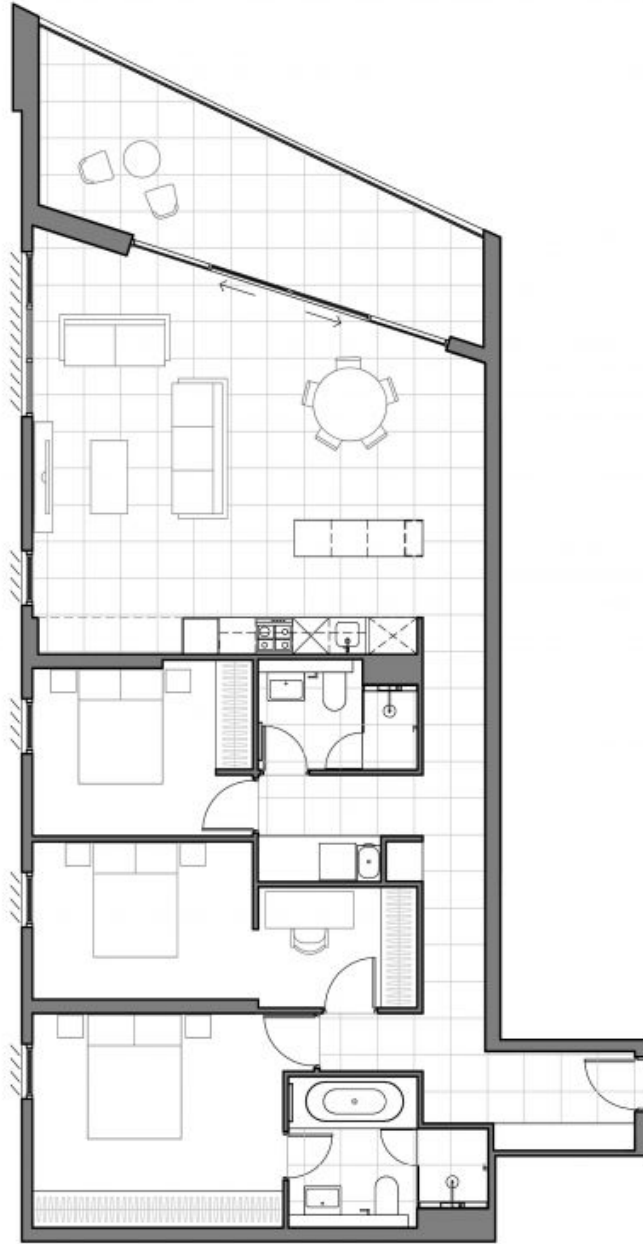
**\$1,750 pw**

**Type** : Apartment

**Date Available** : Tuesday, 16th January 2024

**Faye Dai**

0423 677 160



MEZZO

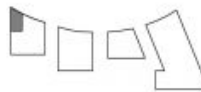
3 Bedroom

COWPER

APARTMENT

C601 C901  
C701 C1001  
C801

Internal Area: 116m<sup>2</sup>  
Balcony Area: 14m<sup>2</sup>  
Total: 130m<sup>2</sup>



Scale



MEZZOSYDNEY.COM.AU  
1800 788 837