



806/88A Christie Street St Leonards, NSW

 1  1

Spacious One Bedroom with Harbour Bridge View

Expertly crafted by acclaimed architects PTW, this residence boasts a sophisticated design. The kitchen features a lavish stone bench with a complementary stone splash-back, an integrated Fisher and Paykel fridge/freezer, and premium Miele appliances.

- Samsung smart lock
- Designer kitchen tap-ware and bathroom fully tiled
- Porcelain large tiled floors, high shadow-line ceilings for interior
- Reverse cycle heating and cooling
- Resort-style rooftop garden with BBQ, outdoor swimming pool and fully equipped gym

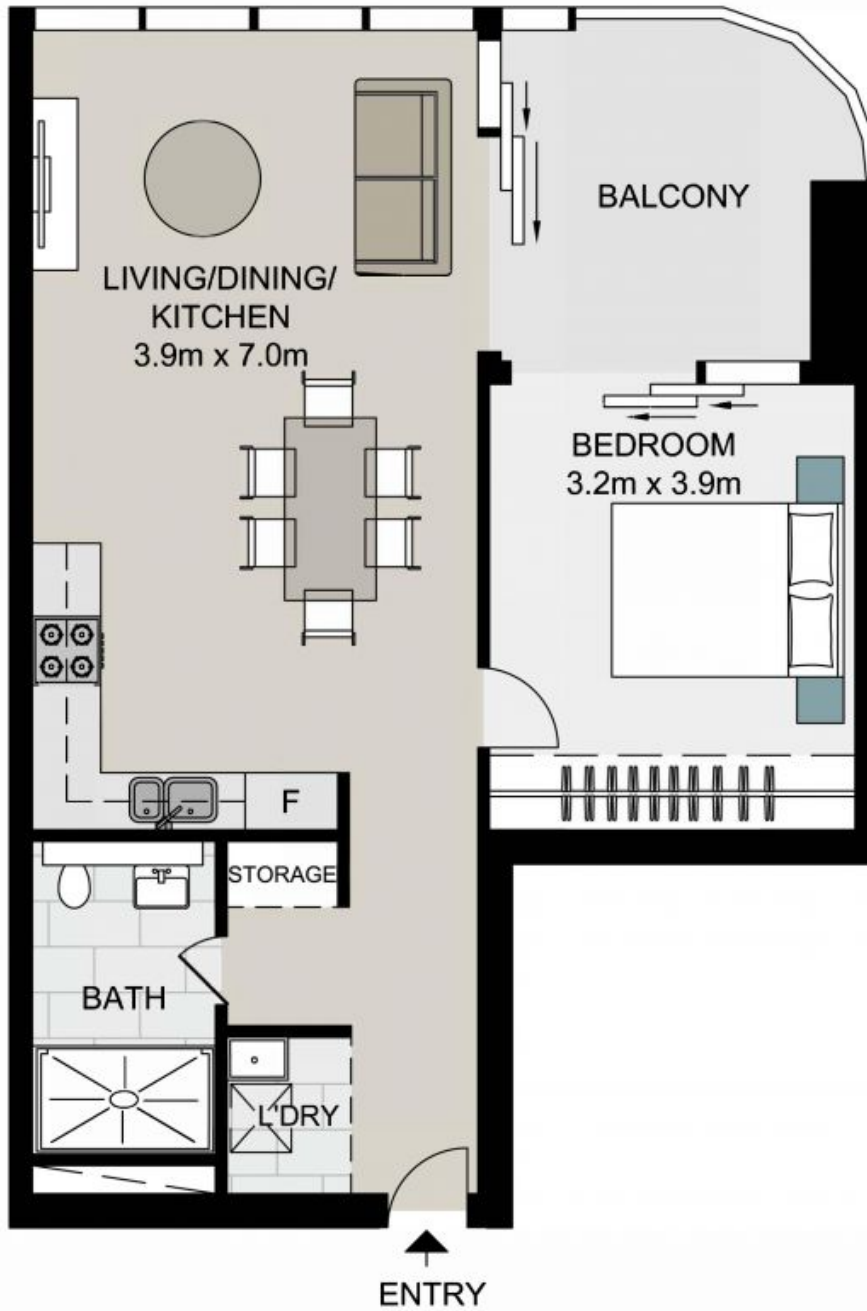
Contact Agent

Type : Apartment
Land : 61 m²
Building Size : 58 m²

Council Rates : \$376.20 p/q
Strata Rates : \$829.40 p/q

Jeffrey Li
 0404 135 763

Sue Tsui
 0455141685



Total Living Area: 58sqm
 Total Strata Area: 61sqm



806/88A Christie Street, ST LEONARDS

Not to scale . Measurements are approximate . Drawn For Marketing purposes only .

