



1506/28 Zetland Avenue Zetland, NSW

 3
  2
 1

Mirvac Built with stunning views - North facing

Located in one of Sydney's rapidly expanding residential areas, The Frederick enjoys an ideal setting amidst the Drying Green parkland, Green Square Train Station, Green Square Library, and Gunyama Aquatic and Recreation Centre. Within minutes, residents have convenient access to shops, schools, childcare centers, restaurants, cafes, and parklands. Exclusive amenities, including a wellness studio, gym, business centre, and sky lounge, further enhance the residents' living experience.

- Three well proportioned bedrooms with built-in wardrobes
- Open-plan living and dining area, with floor to ceiling windows and expansive views
- Designer kitchen with stone benchtops and integrated appliances
- Chic bathrooms with plenty of vanity storage, bath in ensuite & heated towel rails
- North-West facing balcony, with city views
- Internal laundry with dryer included
- 300m to Woolworths, Green Square Train Station (10mins to the City) + Library and 650m to

Contact Agent

Type : Apartment
Sold Date : Thursday, 2nd May 2024
Land : 137 m2
Building Size : 122 m2

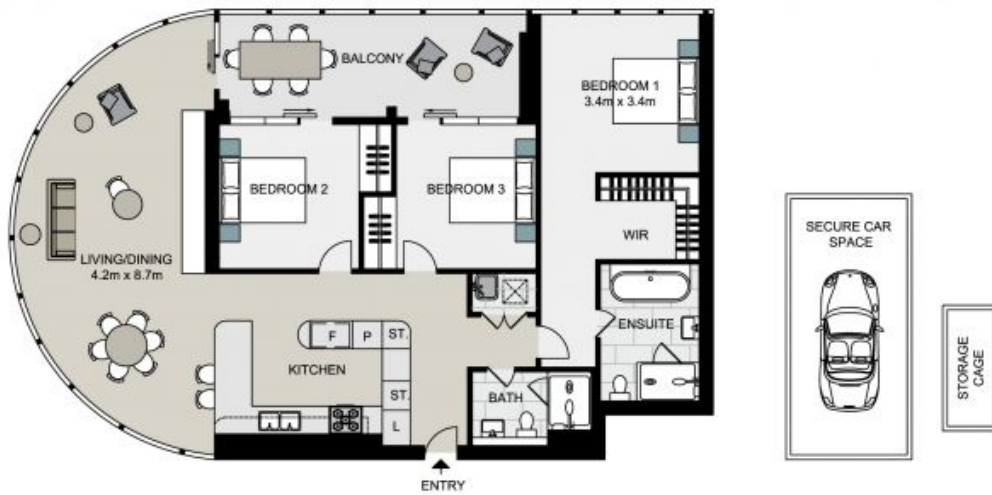
Council Rates : \$300.00 p/q
Water Rates : \$150.00 p/q
Strata Rates : \$2,411.00 p/q

Jeffrey Li

0404 135 763

Faye Dai

0423 677 160



1506/28 Zetland Avenue, ZETLAND

Not to scale . Measurements are approximate . Drawn For Marketing purposes only .

