

2902/500 Pacific Highway St Leonards, NSW

 2
  2
  1

North facing oversized 2 bedroom with sweeping views of Lower North Shore

One of the largest two-bedroom apartments in the area is situated on the 29th floor with a prime North-facing aspect. Every room steps out to a spacious entertainer balcony, enjoying a spectacular sunrise and sunset view.

The abundance of amenities is extraordinary including a concierge, heated pool, spa, sauna, virtual golf, music room, children's playroom, sky lounge and private dining room. Brand new shopping centre "Mall 88" and restaurants rest below, it's steps to the bus, St Leonards station and Crows Nest and close to schools.

Home Features:

- Amazing size internal & external living & dining areas and extra lounge area
- Open plan living and dining area
- Enjoy close proximity to excellent public and private schools, retail and shopping ameni

Contact Agent

Inspect : Saturday, 11th May 2024 12:30 - 1:00
Type : Apartment
Land : 153 m2
Building Size : 137 m2

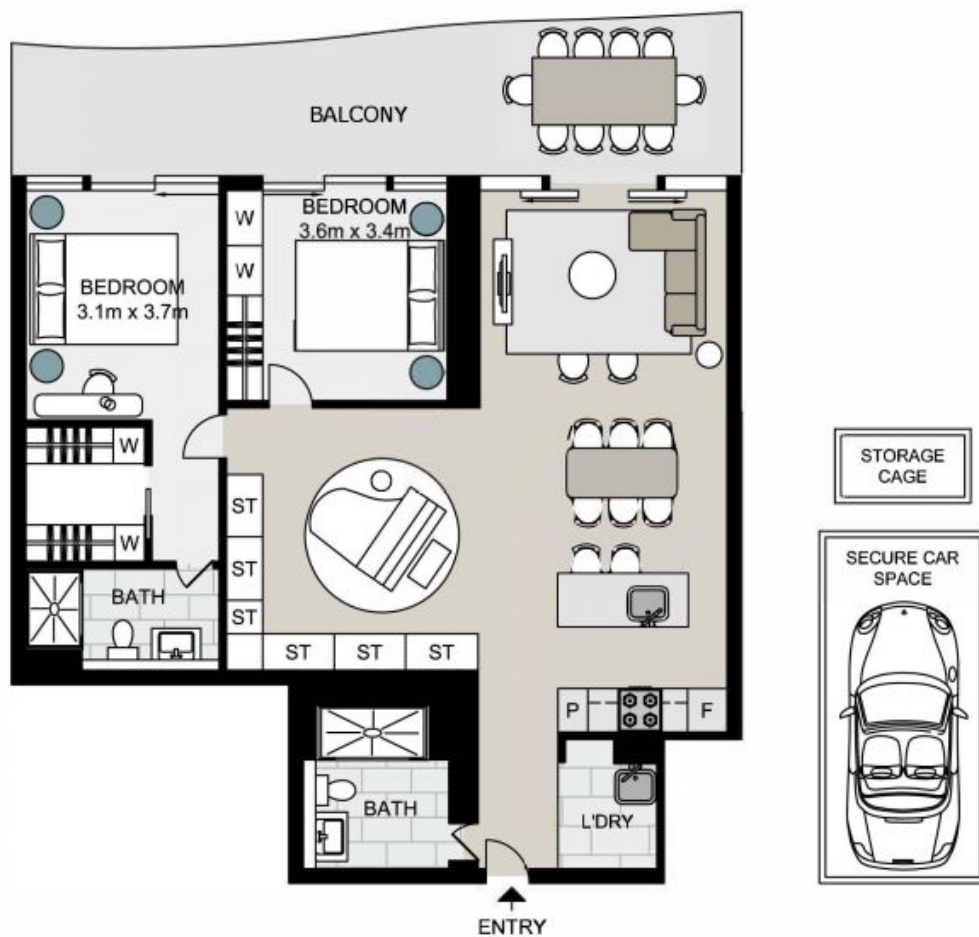
Council Rates : \$376.20 p/q
Water Rates : \$173.29 p/q
Strata Rates : \$2,189.00 p/q

Jeffrey Li

0404 135 763

Sue Tsui

0455141685



Total strata area: 156sqm
Total living area: 137sqm

2902/500 Pacific Highway, ST LEONARDS

Not to scale . Measurements are approximate . Drawn For Marketing purposes only .

