



1103/1 Marshall Avenue St Leonards, NSW



Luxury two bedroom apartment with large living area

This immaculate 'Embassy Tower' of quality has been built to perfection. Built by reputable builder Hutchison, this apartment enjoys unparalleled views from floor-to-ceiling glass, it takes in the harbour bridge, Anzac Bridge and city skyline in one magical sweep. The apartment comes complete with parking and storage.

- Largest two bedroom in the building with 91sqm of Internal size
- 11th floor, corner position, brimming with an abundance of light
- Stone floors and ducted r/c air conditioning
- Open living/dining area, Miele-appointed gas kitchen, plus study nook
- Two bedrooms with ensuite and European laundry
- Intercom entry, concierge service, security car space and storage cage
- Easy access to the hospital precinct and a stroll from St Leonards station

Contact Agent

Type : Apartment
Land : 108 m2
Building Size : 91 m2

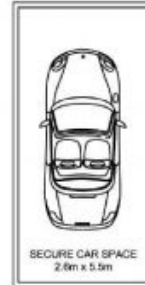
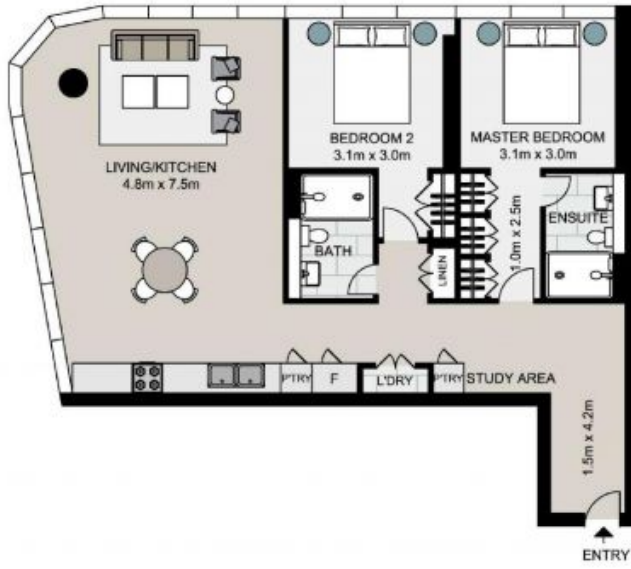
Council Rates : \$376.20 p/q
Water Rates : \$173.29 p/q
Strata Rates : \$1,885.63 p/q

Jeffrey Li

0404 135 763

Faye Dai

0423 677 160



Total strata area: 108sqm
Total living area: 91sqm

1103/1 Marshall Avenue, ST LEONARDS

Not to scale . Measurements are approximate . Drawn For Marketing purposes only .

