



715/303 Botany Road Zetland, NSW



Designer One Bedroom Flexi Apartment with huge study/Second Bedroom

Designed by Koichi Takada Architects, the luxury apartments within this ground-breaking development have been devised with future residents in mind. Infinity by Crown Group's award-winning design means each sun-filled apartment embraces natural light and boasts expanses of living space, providing absolute seclusion from the world around you.

Features include:

- Spacious bedrooms with built-in wardrobes
- Floor-to-ceiling glass throughout
- European appliances and leading energy-efficient home automation technology

\$950 pw

Type : Apartment

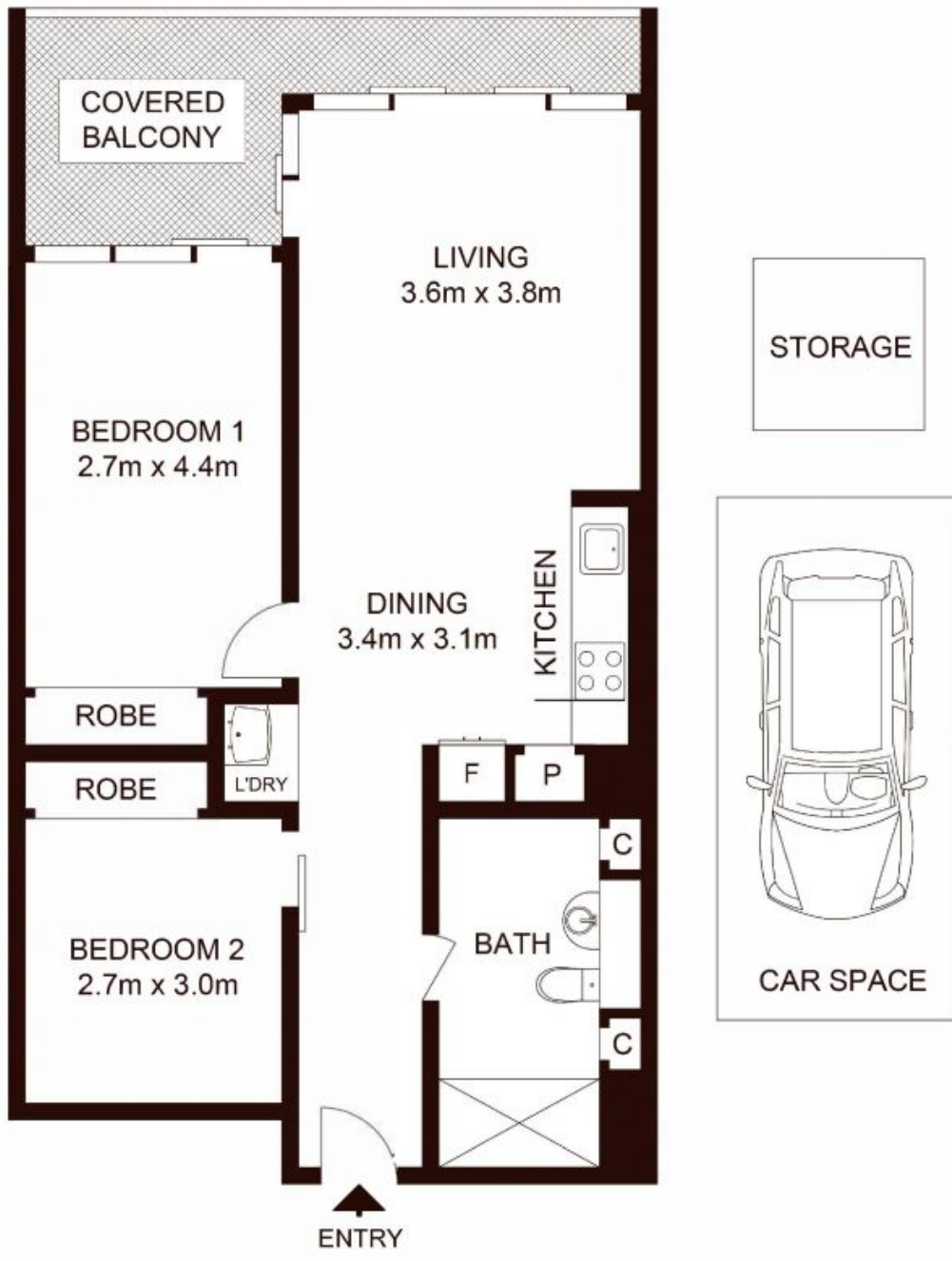
Date Available : Friday, 17th November 2023

Land : 86 m²

Building Size : 71 m²

Charlie Luo

0420488278



ENTRY
LEVEL 7

TOTAL LIVING AREA: 71sqm
TOTAL STRATA AREA: 86sqm

715/303 Botany Road, ZETLAND

Not to scale • All measurements are approximate • Drawn for marketing purposes only • Floorplan by © Xorix Media

