



1203/472 Pacific Highway St Leonards, NSW



3



2



2

Exceptional Harbour Views Mirvac quality

With sweeping city views that claim the Harbour Bridge as its centrepiece, this apartment promises a lifestyle of sophistication in the resort-style 'St Leonards Square' building. Pure indulgence offers floor-to-ceiling windows, a versatile floor plan, and sweeping views of Sydney Harbour and its surroundings.

Apartment features:

- Well-appointed bedrooms with built-in wardrobes
- Master suite with walk-through robe and bath in ensuite
- Open-plan living and dining area with great views
- Modern kitchen with stone benchtops and Miele appliances
- Luxurious bathroom with plenty of storage
- Generous balcony with spectacular views
- Internal laundry with & dryer included

\$2,490,000

Type : Apartment
Sold Date : Thursday, 4th January 2024
Land : 160 m2
Building Size : 128 m2

Council Rates : \$373.00 p/q
Water Rates : \$246.86 p/q
Strata Rates : \$2,197.10 p/q

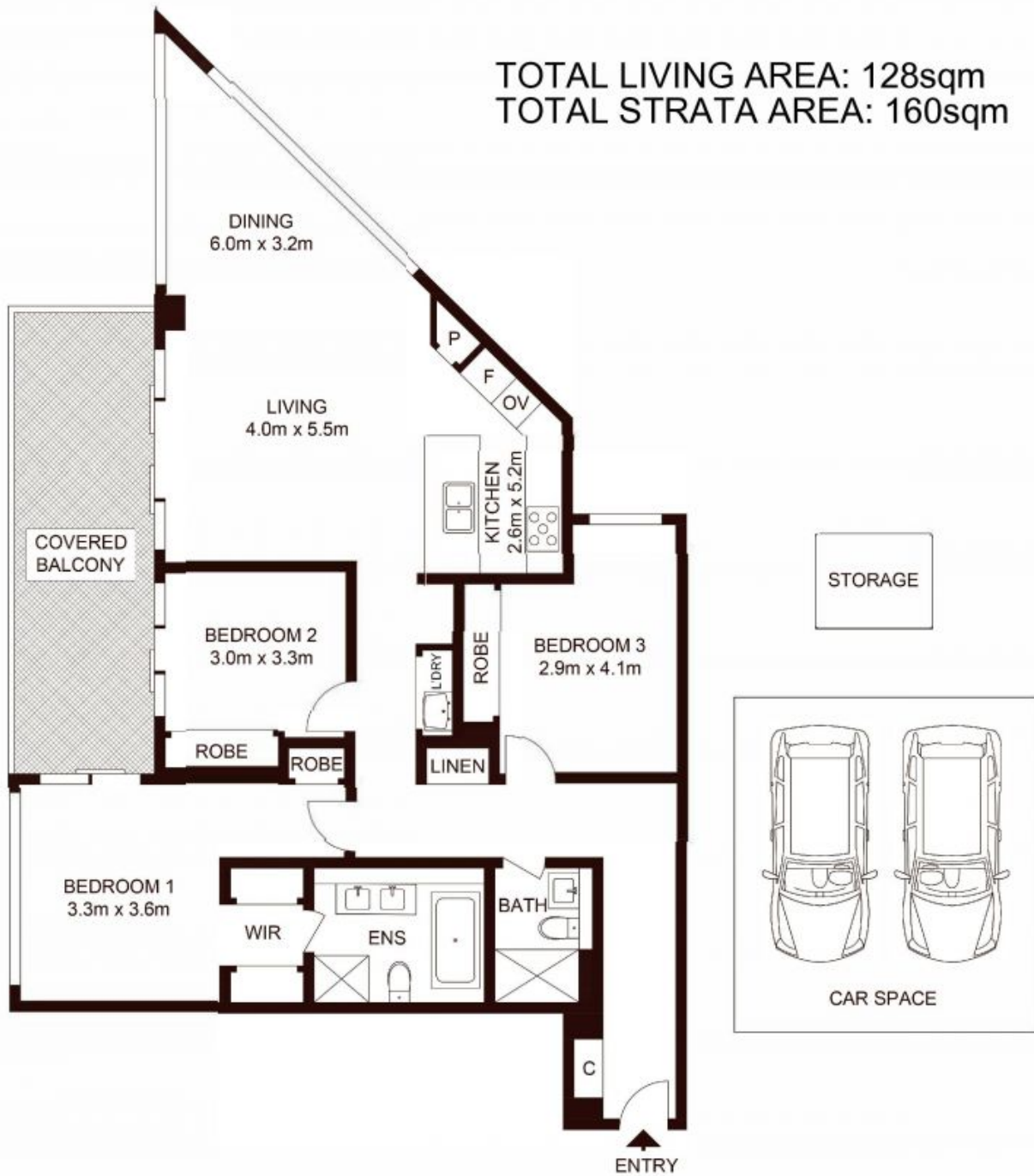
Jeffrey Li

0404 135 763

Faye Dai

0423 677 160

TOTAL LIVING AREA: 128sqm
TOTAL STRATA AREA: 160sqm



1203/472 Pacific Highway, ST LEONARDS

Not to scale • All measurements are approximate • Drawn for marketing purposes only • Floorplan by © Xorix Media

