



208/28A Carlingford Road Epping, NSW



1



1

Large One bedroom Apartment at Prime Location

This ultra-convenient modern apartment offers you a quality lifestyle with top school catchment. Only minutes to local public school, Coles supermarket, local restaurant and Epping station. Direct links to Norwest Business Park, Macquarie Shopping Centre, Eastwood and Chatswood.

It presents an outstanding move-in ready and ticked all the boxes for first home buyers, wonderful lifestyle opportunity for downsizers and astute investors.

Home Features:

- ??Spacious undercover balcony perfect for entertaining
- ??Main bathroom with floor to ceiling tiles
- ??Spacious and bright lounge and dining with timber flooring
- ??Ducted air conditioning

Contact Agent

Type : Apartment
Sold Date : Wednesday, 13th March 2024
Land : 57 m2
Building Size : 55 m2

Council Rates : \$316.20 p/q
Water Rates : \$180.38 p/q
Strata Rates : \$777.54 p/q

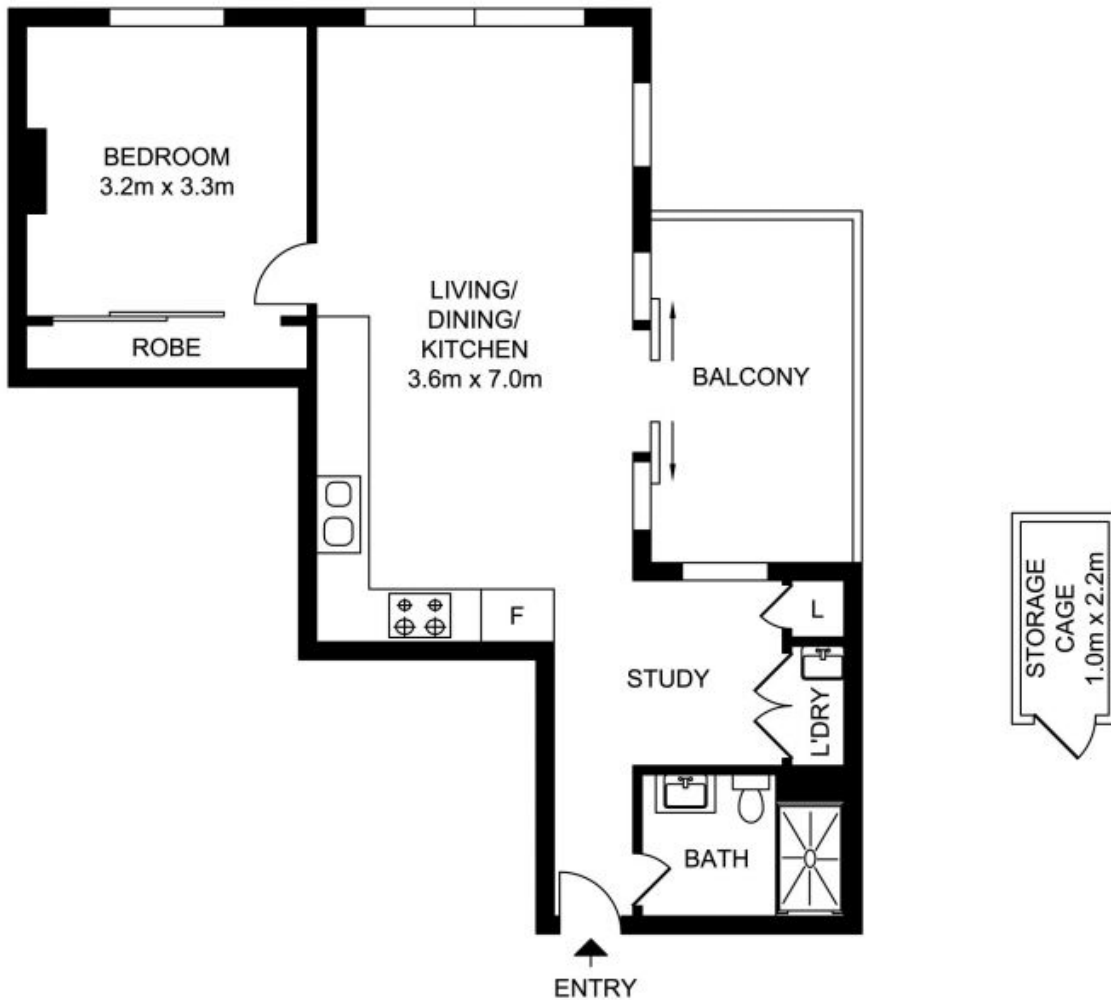
Jeffrey Li

0404 135 763

Byron Davies

0424564266

TOTAL LIVING AREA: 55sqm
TOTAL STRATA AREA: 57sqm



208/28A Carlingford Road, EPPING

Not to scale . Measurements are approximate . Drawn For Marketing purposes only .

