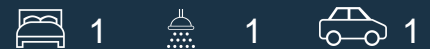




Level 2/23/2-4 Lodge Street Hornsby, NSW



Park View 1 Bedroom Apartment with Parking

Neatly tucked between the trees and immaculately landscaped gardens, The Grace is a unique opportunity to find delight in the serenity of suburbia while enjoying close proximity to the city.

From this rare parkside location in a leafy, tree-lined street, you can enjoy all that Sydney has to offer. Storey Park, located across the road from The Grace.

Features include:

- Balcony perfect for entertaining
- Mirrored built-in wardrobes
- Premium oak floorboards
- Stainless steel Bosch kitchen appliances
- Caesarstone kitchen benchtops
- Dishwasher

\$550 pw

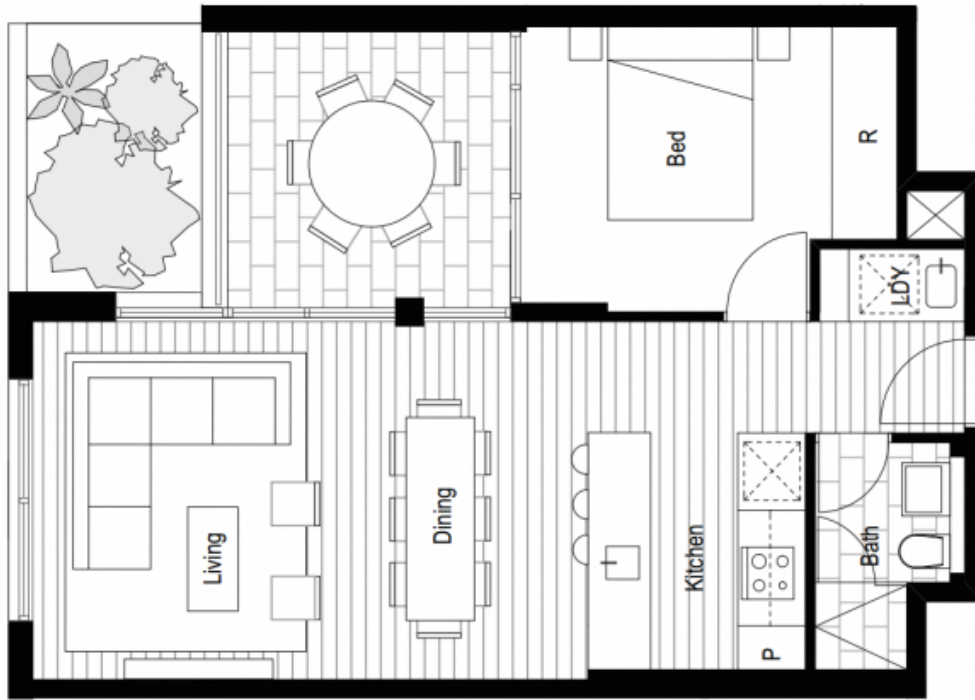
Type : Apartment

Date Available : Sunday, 12th November 2023

Bond : \$2,200.00

Charlie Luo

0420488278



LOT SIZE: 61 SQM

STORAGE: 2 SQM

PARKING: 13 SQM

Disclaimer: While all details have been carefully prepared and are believed to be correct, no representation is made or warranty given either expressly or implied by the vendor or their agents as to the accuracy of the information contained in this document. Intending purchasers must rely on their own expertise. Illustrations are for presentation purposes only and are not indicative of the final product. The illustrations should not be relied upon as an accurate representation of the final product. Specifications may change at any time. The vendor specifically disclaims that the product layout, fixtures, fittings, appliances and brands are depicted for utility purposes only and are not items included in the sale of any property. Purchasers should seek their own legal and financial advice before deciding to purchase any property. Contact us at the time of print.