




1107/500 Pacific Highway St Leonards, NSW

 2
  2
  1

Sundrenched North East facing two bedroom in a premier lifestyle location

This near new built generously-sized two-bedroom apartment is situated on the 11th floor at a prime corner position that incorporates a north-east facing aspect with open-plan living leading out onto a massive entertainer balcony.

Home Features:

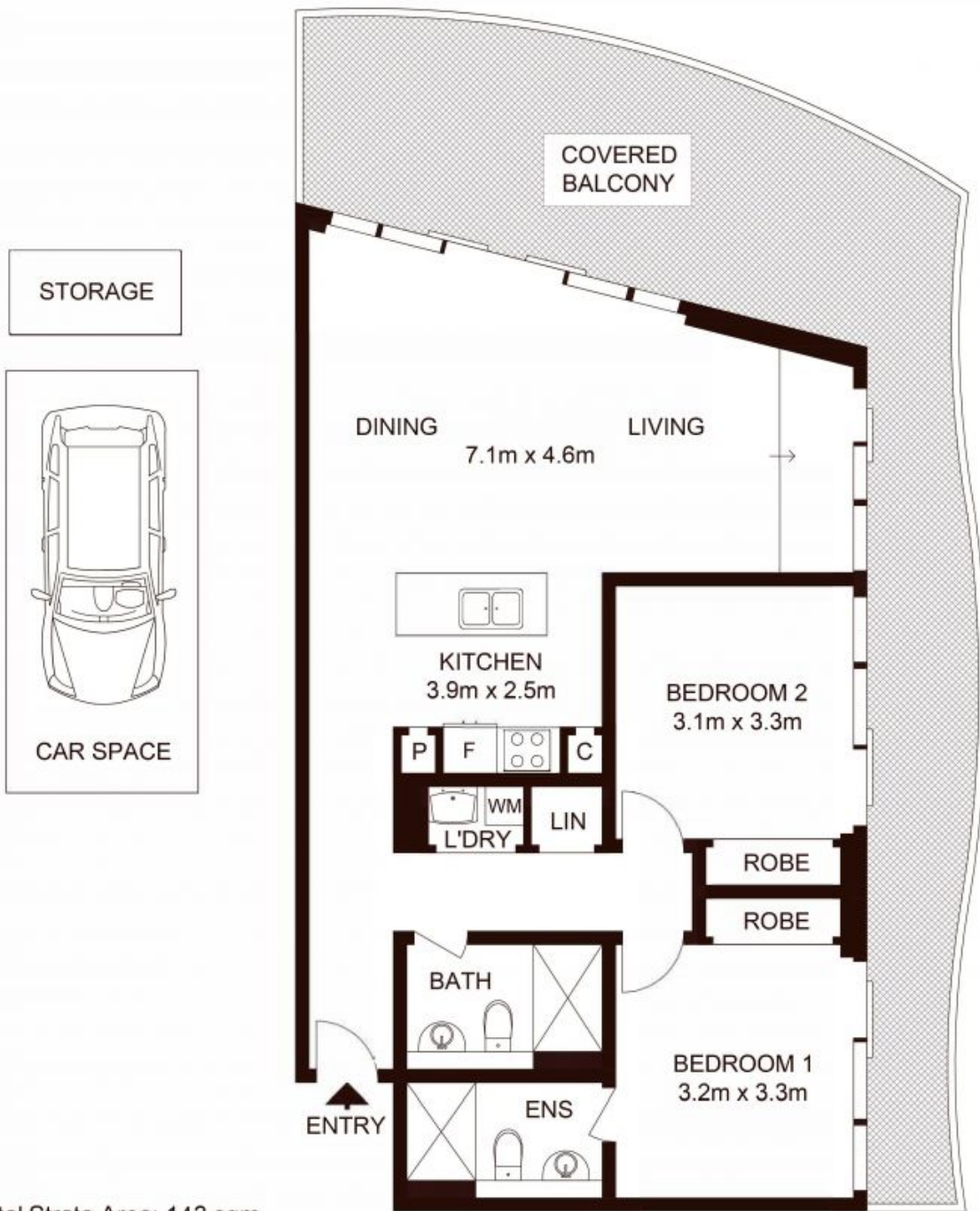
- Luxuriously appointed and finished to the highest standards
- Sun-drenched entertainment balcony
- Generous proportions featuring open plan living and dining areas with abundant natural light
- Luxury kitchen with high-quality Miele appliances
- Generous bedrooms with built-in-robe

LEASED

Type : Apartment
Date Available : Sunday, 8th October 2023
Land : 143 m2
Building Size : 123 m2

Reika Morikawa

Reika Morikawa



Total Strata Area: 143 sqm
 Total Living Area: 123 sqm

LEVEL 11

1107/500 Pacific Highway, ST LEONARDS

Not to scale • All measurements are approximate • Drawn for marketing purposes only • Floorplan by © Xorix Media

