

1905/486 Pacific Highway St Leonards, NSW

 2
  2
  1

Fully Furnished Harbour facing two bedrooms in Mirvac built complex

With sweeping city views that claim the Harbour Bridge as its centrepiece, this apartment promises a lifestyle of sophistication in the resort-style 'St Leonards Square' building. Pure indulgence offers floor-to-ceiling windows, a versatile floor plan, and sweeping views of Sydney Harbour and its surroundings.

Home Features:

- Floor-to-ceiling glass windows with dazzling day/night views
- Two storage cages, one in the car park basement and another one conveniently located on level 19 residential level
- Modern island kitchen with stone benchtop and built-in Miele appliances

There are 29 visitor spaces, 14 car-share spaces, and 18 electronic car charging bays. Res

\$1,200 pw

Type : Apartment

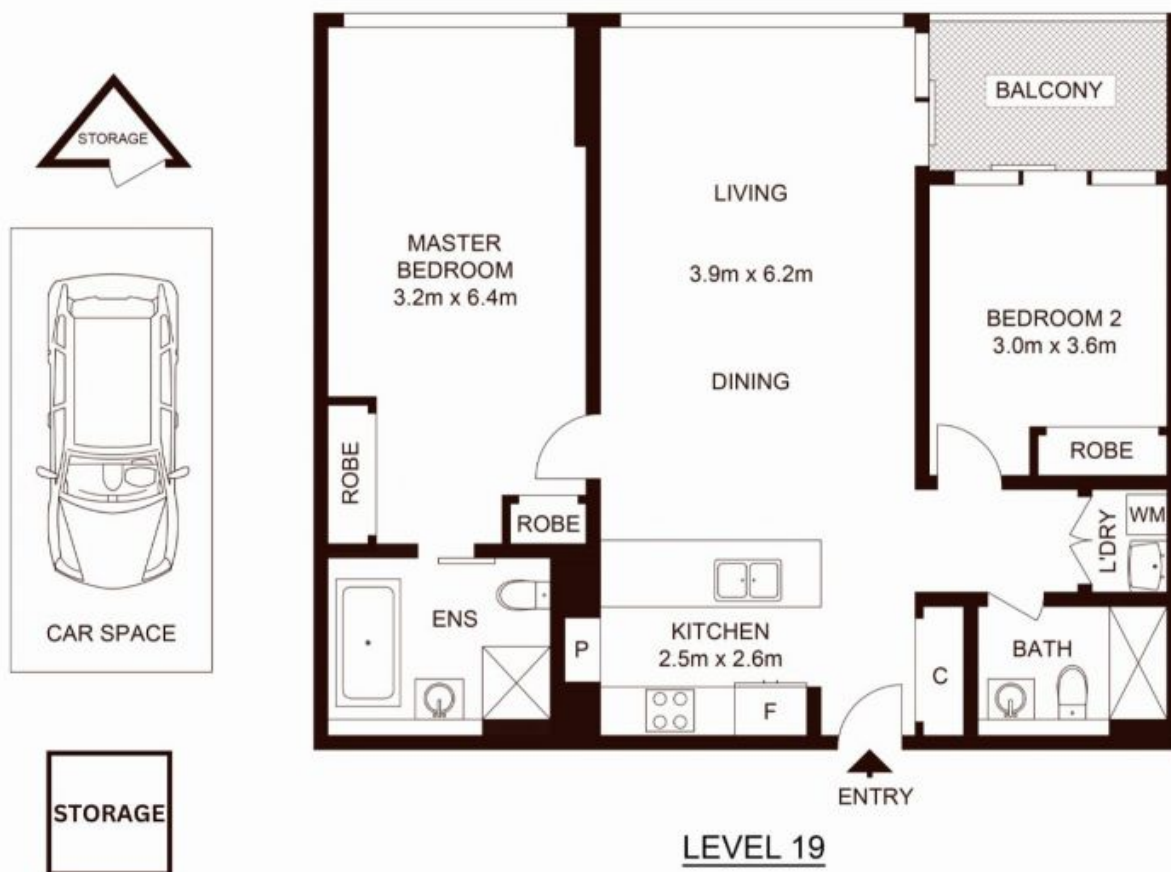
Date Available : Wednesday, 20th September 2023

Bond : \$4,800.00

Jeffrey Li

0404 135 763

Reika Morikawa



TOTAL LIVING AREA : 89sqm
TOTAL STRATA AREA : 106sqm

1905/486 Pacific Highway, ST LEONARDS

Not to scale • All measurements are approximate • Drawn for marketing purposes only • Floorplan by © Xorix Media

