



1105/486 Pacific Highway St Leonards, NSW

 2
  2
  1

Mirvac Built a popular Two bedroom layout

With sweeping city views across Sydney Harbour and CBD, this apartment promises a lifestyle of sophistication in the resort-style 'St Leonards Square' building. Pure indulgence offers floor-to-ceiling windows, a versatile floor plan, and sweeping views of Sydney Harbour and its surroundings.

Enjoy outstanding convenience, being located only approx. 300m from St Leonards train station and moments to some of Sydney's best healthcare, schools, shopping, and dining destinations. Connectivity will soon be even greater with the new Crows Nest Metro station approximately 150m away to provide faster and more frequent trips to the CBD.

Home Features:

There are 29 visitor spaces, 14 car-share spaces, and 18 electronic car charging bays. Res

Contact Agent

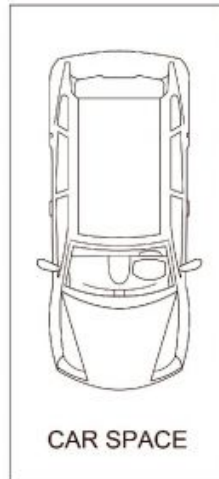
Type : Unit
Sold Date : Tuesday, 28th November 2023
Land : 107 m2
Building Size : 89 m2

Council Rates : \$359.00 p/q
Water Rates : \$180.00 p/q
Strata Rates : \$1,392.00 p/q

Jeffrey Li

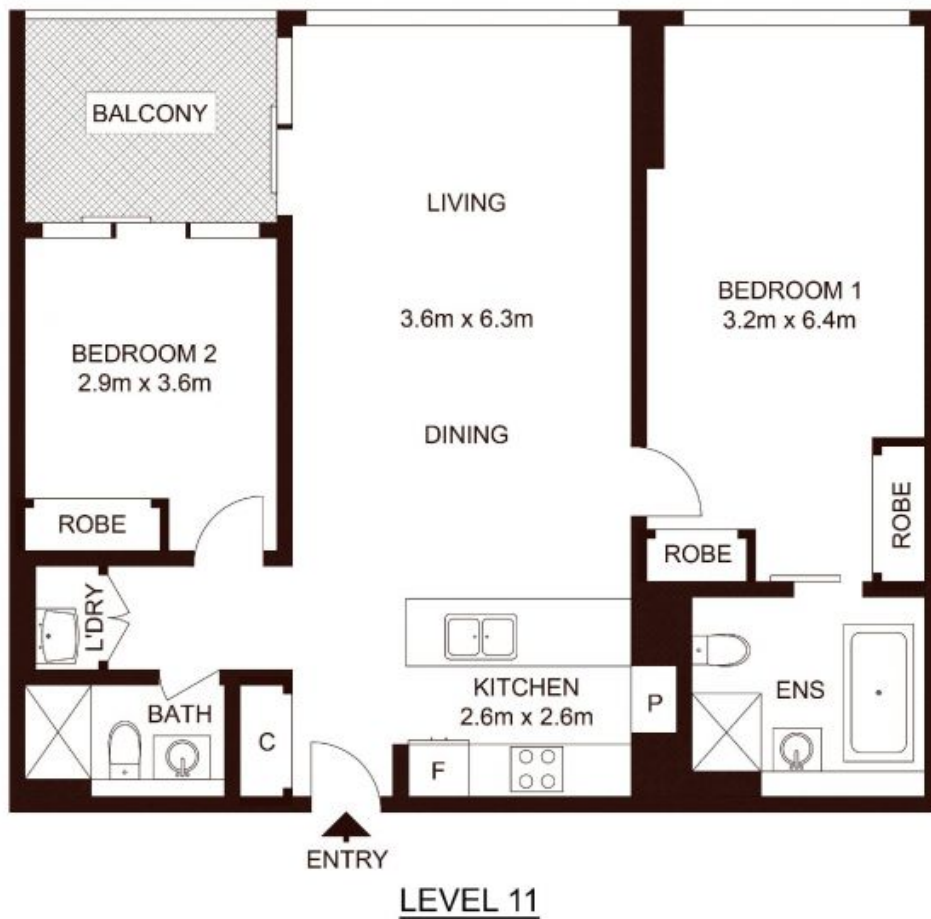
0404 135 763

Reika Morikawa



TOTAL LIVING AREA: 89sqm
TOTAL STRATA AREA: 107sqm

STORAGE



1105/486 Pacific Highway, ST LEONARDS

Not to scale • All measurements are approximate • Drawn for marketing purposes only • Floorplan by © Xorix Media

