




501/563 Pacific Highway St Leonards, NSW

 2  1  1

Luxury Bright & Spacious Apartment with ultra convenience

This luxury appointed boutique development features luxurious appointments and an unsurpassed level of refined craftsmanship. Positioned in the heart of St Leonards, just 5km north of Sydney's CBD, relish in the prestigious setting amongst some of the finest lifestyle amenities and Crows Nest where endless dining options, bars and cafs line the streets all within a brief stroll from home.

Culminating in a spectacular rooftop terrace immersed in sweeping vistas across Woodford Bay and beyond, it sits just 70m from the proposed Crows Nest metro rail service, 350m to St Leonards station and close to village shops and schools.

- Boutique building consisting of only 17 apartments
- 5 min walk to St Leonards train station
- Ground floor retail

Contact Agent

Type : Apartment
Sold Date : Monday, 20th November 2023
Land : 86 m2
Building Size : 73 m2

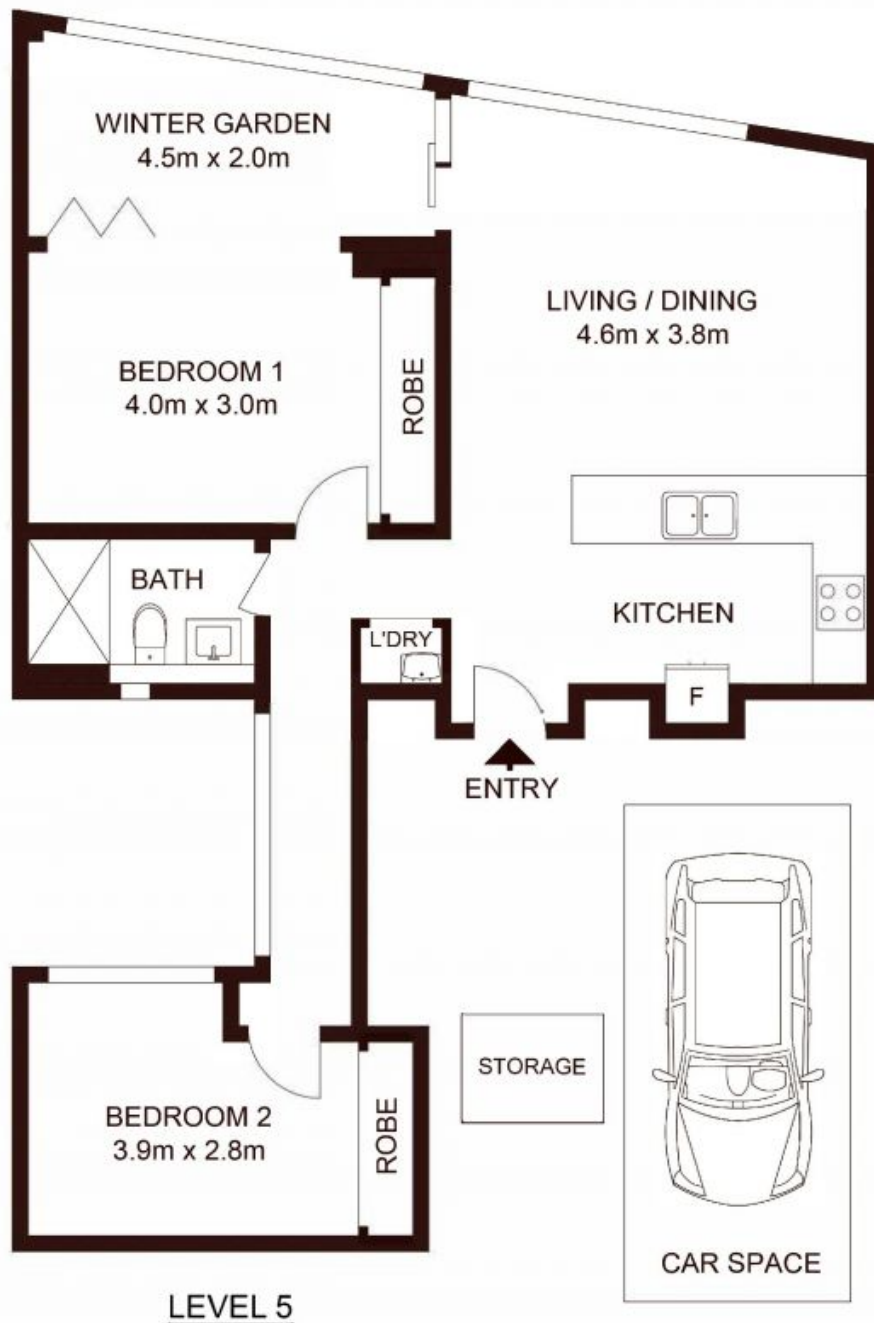
Council Rates : \$280.00 p/q
Water Rates : \$180.00 p/q
Strata Rates : \$1,910.00 p/q

Jeffrey Li

0404 135 763

Faye Dai

0423 677 160



LEVEL 5

Total strata area: 86sqm

Total living area: 73sqm

501/563 Pacific Highway, ST LEONARDS

Not to scale • All measurements are approximate • Drawn for marketing purposes only • Floorplan by © Xorix Media

