



1102/9 Albany Street St Leonards, NSW

 2
  2
  1

City Views, Corner position and stone throw from Metro

Discover a lifestyle of exceptional convenience and superb contemporary style with this light-infused two-bedroom apartment that sits on the 11th floor of 'Metropolitan Residences'. Positioned on the Southwest corner facing the back quite laneway, it showcases stream-lined functionality at its finest, adorned with a sensational array of high-quality finishes. The apartment is fresh and bright, enjoying an outlook over Naremburn and Crow's Nest district.

Home Features:

- Expansive south-west aspect with amazing Sydney skyline views
- Premium engineered oak flooring, European laundry and fitted wardrobes

Contact Agent

Type : Apartment
Sold Date : Tuesday, 10th October 2023
Land : 100 m2
Building Size : 85 m2

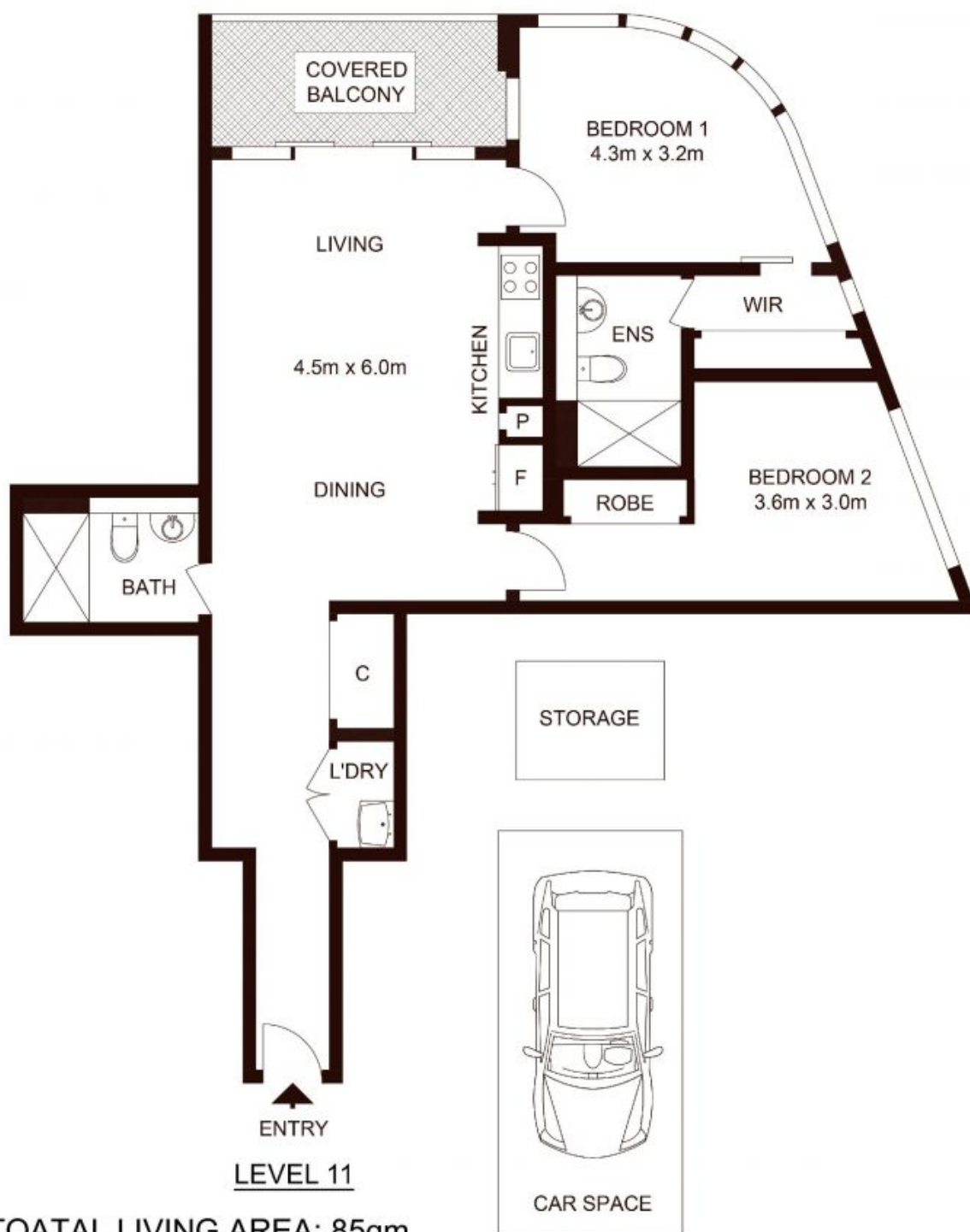
Council Rates : \$304.72 p/q
Water Rates : \$225.55 p/q
Strata Rates : \$1,118.25 p/q

Jeffrey Li

0404 135 763

Faye Dai

0423 677 160



TOATAL LIVING AREA: 85qm
 TOTAL STRATA AREA: 100sqm

1102/9 Albany Street, ST LEONARDS

Not to scale • All measurements are approximate • Drawn for marketing purposes only • Floorplan by © Xorix Media

