



715/303 Botany Road Zetland, NSW



## Designer One Bedroom Flexi Apartment with huge study/Second Bedroom

Designed by Koichi Takada Architects, the luxury apartments within this ground-breaking development have been devised with future residents in mind. Infinity by Crown Group's award-winning design means each sun-filled apartment embraces natural light and boasts expanses of living space, providing absolute seclusion from the world around you.

Features include:

- Spacious bedrooms with built-in wardrobes
- Floor-to-ceiling glass throughout
- European appliances and leading energy-efficient home automation technology

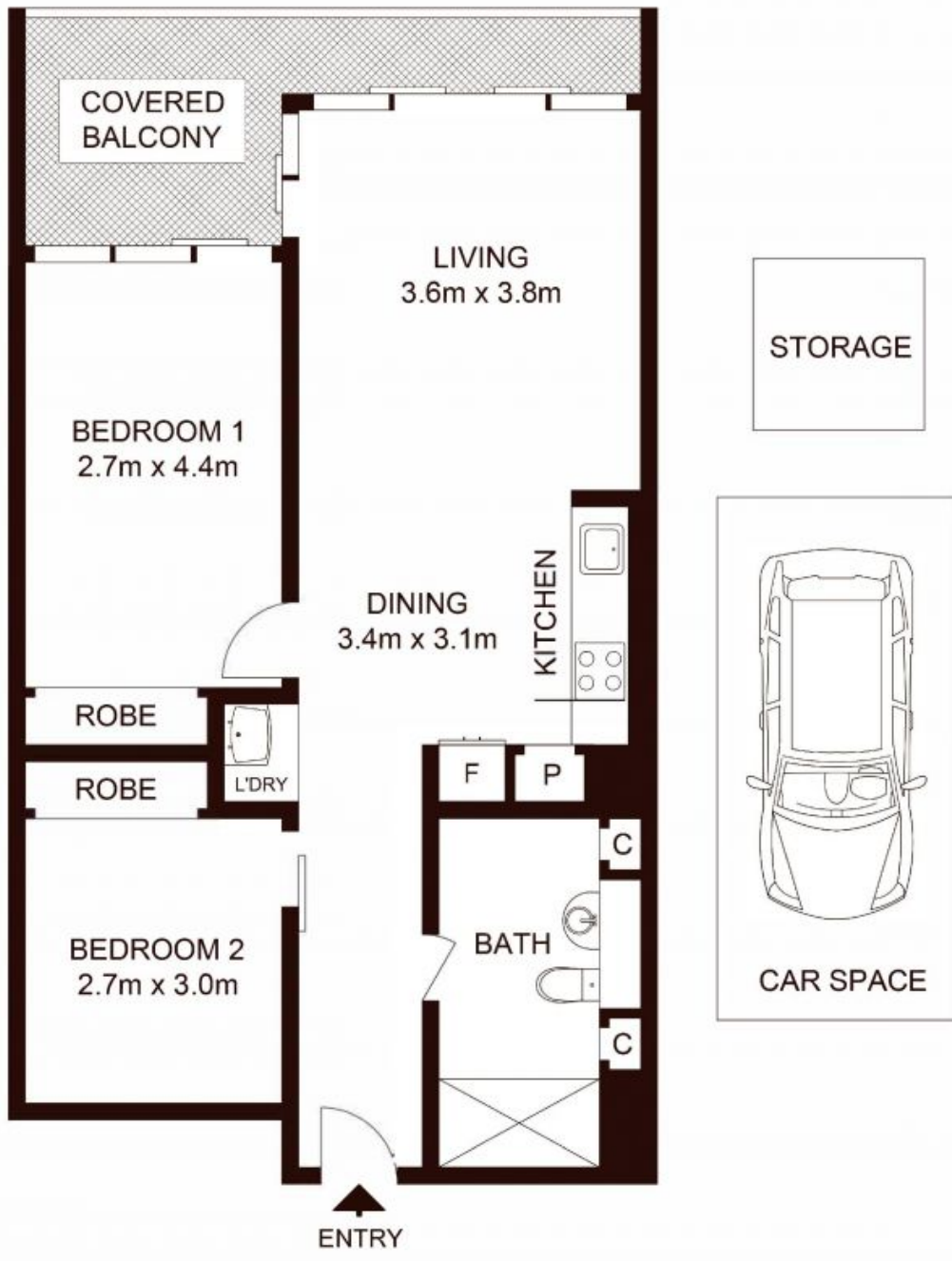
**\$951000**

**Type** : Apartment  
**Sold Date** : Thursday, 1st February 2024  
**Land** : 86 m2  
**Building Size** : 71 m2

**Council Rates** : \$437.74 p/q  
**Water Rates** : \$203.39 p/q  
**Strata Rates** : \$1,500.00 p/q

**Jeffrey Li**  
 0404 135 763

**Faye Dai**  
 0423 677 160



**LEVEL 7**

**TOTAL LIVING AREA: 71sqm**  
**TOTAL STRATA AREA: 86sqm**

**715/303 Botany Road, ZETLAND**

Not to scale • All measurements are approximate • Drawn for marketing purposes only • Floorplan by © Xorix Media

