

3509/500 Pacific Highway St Leonards, NSW



harbour view delight

Apartment Feature

- * Enjoys direct view over Barangaroo, Darling Harbour, and Anzac Bridge on one side and stunning district view over the mountains on the other.
- * Spacious living and dining with a separate bedroom on either side
- * All bedrooms plus living room connecting to large entertainers' balcony
- * Gas cooking kitchen, island benchtop & Miele appliances
- * Bedrooms with built-in robes & master with ensuite
- * Abundance of storage cupboards, video intercom & lift
- * Easily accessible to secure car space and storage cage
- * Amenities includes a concierge, gym, pool, spa, sauna, music room, theatre room, and Tesla recharging bay

Type : Apartment
Sold Date : Tuesday, 29th August 2023

Council Rates : \$180.00 p/q
Water Rates : \$250.00 p/q
Strata Rates : \$2,300.00 p/q

Jeffrey Li
 0404 135 763

Jeffrey Li
 0404 135 763

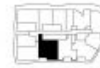


- F Fridge
- L Laundry
- P Pantry
- ST Storage
- W Wardrobe

Apartment Type	2 Bedrooms - Media Nook
Bathrooms	2
Internal	105 m ²
External	17 m ² *
Parking	1

THE LANDMARK

Sculpted from Sydney



Two Bed Apartment Type H - DDA

Disclaimer: Colliers International does not guarantee, warrant or represent that the information contained in this advertising and marketing document is correct. Any interested parties should make their own enquiries as to the accuracy of the information. We assume no reliance or implied terms, conditions and warranties arising out of this document and any liability for loss or damage arising there from.