



908/472 Pacific Highway St Leonards, NSW

 2
  2
  1

North east facing Mirvac built

Designed for immaculate contemporary living and open plan in/outdoor entertaining, this northeast apartment boasts enviable resort-style living in the new 'St Leonards Square' building. Quality appointments ensure there's nothing to spend and everything to enjoy. The building promotes an active lifestyle with a shared indoor lap pool, gym, spa, sauna, function rooms and terrace.

Home Features:

- Open plan kitchen, living/dining flow to covered balcony
- upgraded Stone bench tops and gas stainless steel Miele appliances
- Generous bedrooms with built-in robes, one with an ensuite
- Internal laundry, ducted air conditioning, security entrance
- Stroll to the heart of Crows Nest village eateries and nightlife

\$1,380,000

Type : Apartment
Sold Date : Thursday, 14th September 2023
Land : 100 m2
Building Size : 84 m2

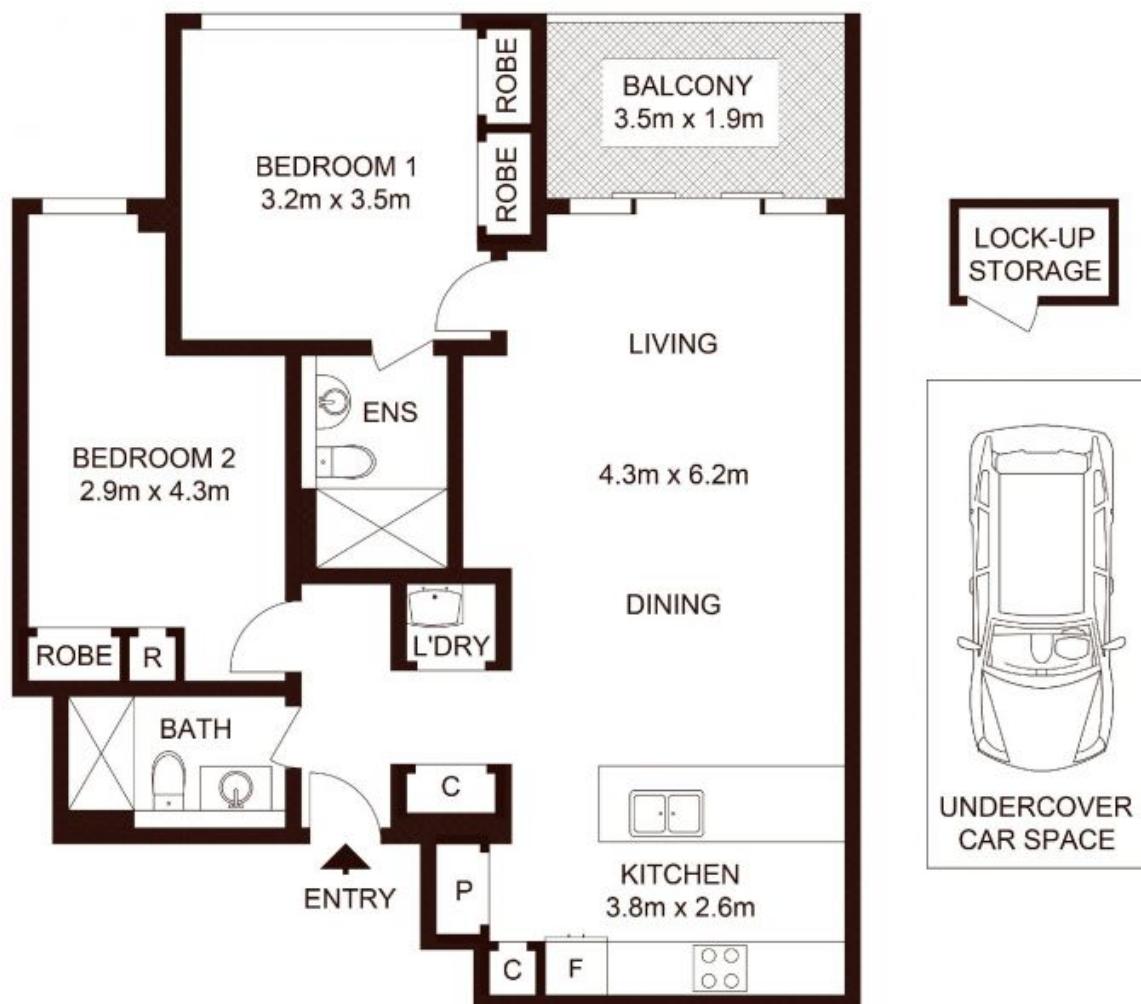
Council Rates : \$359.00 p/q
Water Rates : \$223.45 p/q
Strata Rates : \$1,273.17 p/q

Jeffrey Li

0404 135 763

Faye Dai

0423 677 160



TOTAL LIVING AREA: 84sqm
TOTAL STRATA AREA: 100sqm

908/472 Pacific Highway, ST LEONARDS

Not to scale • All measurements are approximate • Drawn for marketing purposes only • Floorplan by © Xorix Media

