



3202/116 Bathurst Street Sydney, NSW

 3
  2
  1

Northeast facing with sweeping views over Hyde Park

One of the city's ultimate CBD addresses, this superb luxury apartment is designed to maximise beautiful city and park views.

North-east-facing aspect apartment with views overlooking Hyde Park makes a great first impression in Sydney's ultimate and exclusive 'Castle Residences'.

Apartment features:

- Three good size bedrooms all North facing
- Living room flows freely to north and east facing balcony overlooking Hyde Park
- Light washed free-flowing living/dining space that opens out to the outdoors
- Timber decked balcony overlooking Hyde Park complete with outdoor kitchen

Contact Agent

Type : Apartment
Land : 123 m2
Building Size : 122 m2

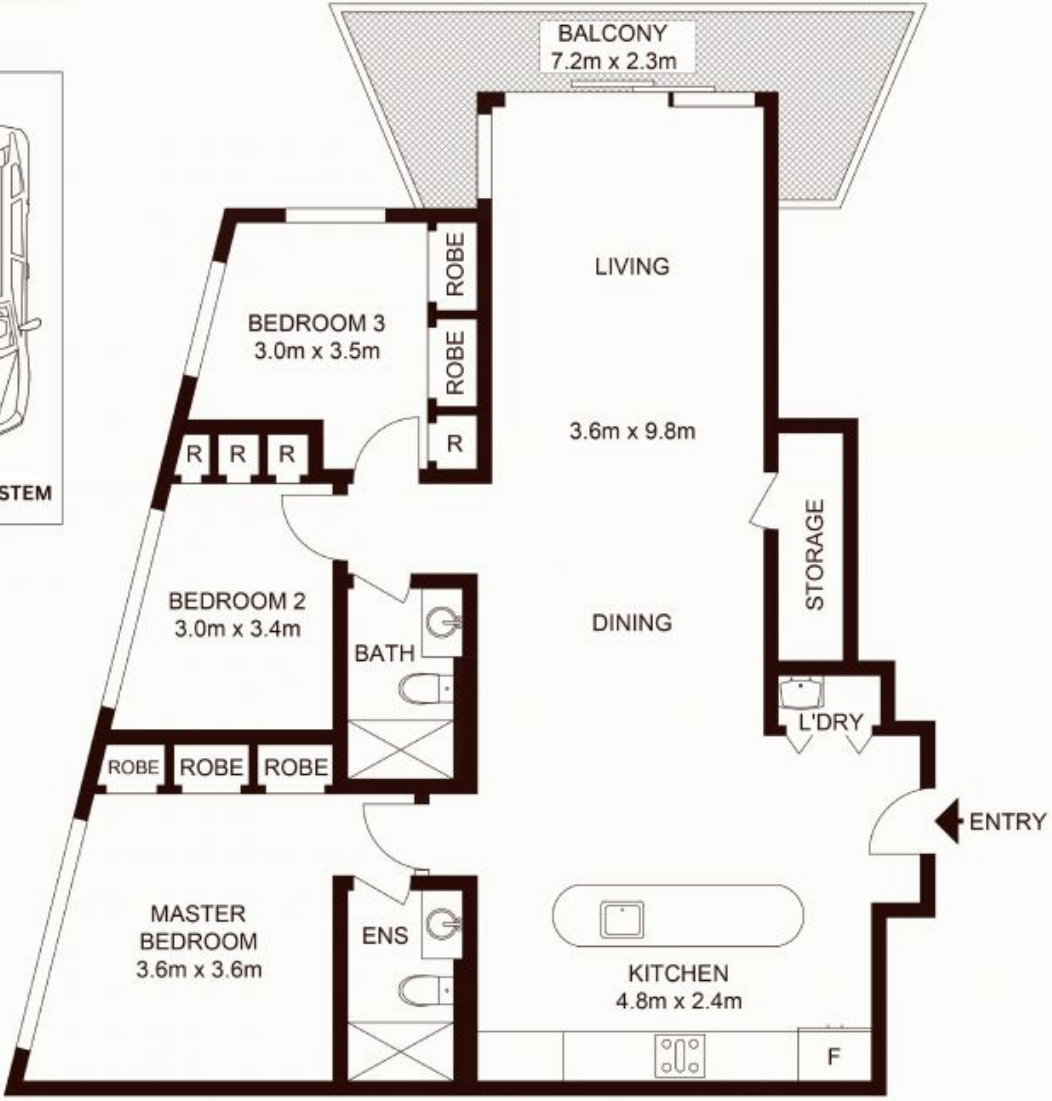
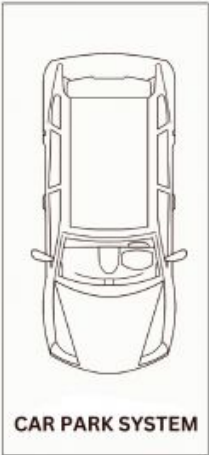
Water Rates : \$211.00 p/q
Strata Rates : \$6,359.32 p/q

Jeffrey Li

0404 135 763

Reika Morikawa

STORAGE



TOTAL LIVING AREA: 122sqm
TOTAL STRATA AREA: 123sqm

3202/116 Bathurst Street, SYDNEY

Not to scale • All measurements are approximate • Drawn for marketing purposes only • Floorplan by © Xorix Media

