



2209/500 Pacific Highway St Leonards, NSW

 2
  2
  1

## Corner position apartment with a large spacious living area in prestige Landmark

- \* Spacious living and dining with a separate bedroom area
- \* One of the largest two-bedroom internal areas in the complex
- \* All bedrooms plus living room connecting to large entertainers' balcony
- \* Gas cooking kitchen, island benchtop & Miele appliances
- \* Bedrooms with built in robes & master with ensuite
- \* Abundance of storage cupboards, video intercom & lift
- \* Easily accessible to secure car space and storage cage
- \* Amenities include a 24-hour concierge, gym, pool, spa, sauna, music room, theatre room, virtual golf and many more

## Contact Agent

**Type** : Apartment  
**Sold Date** : Tuesday, 29th August 2023  
**Land** : 125 m2  
**Building Size** : 109 m2

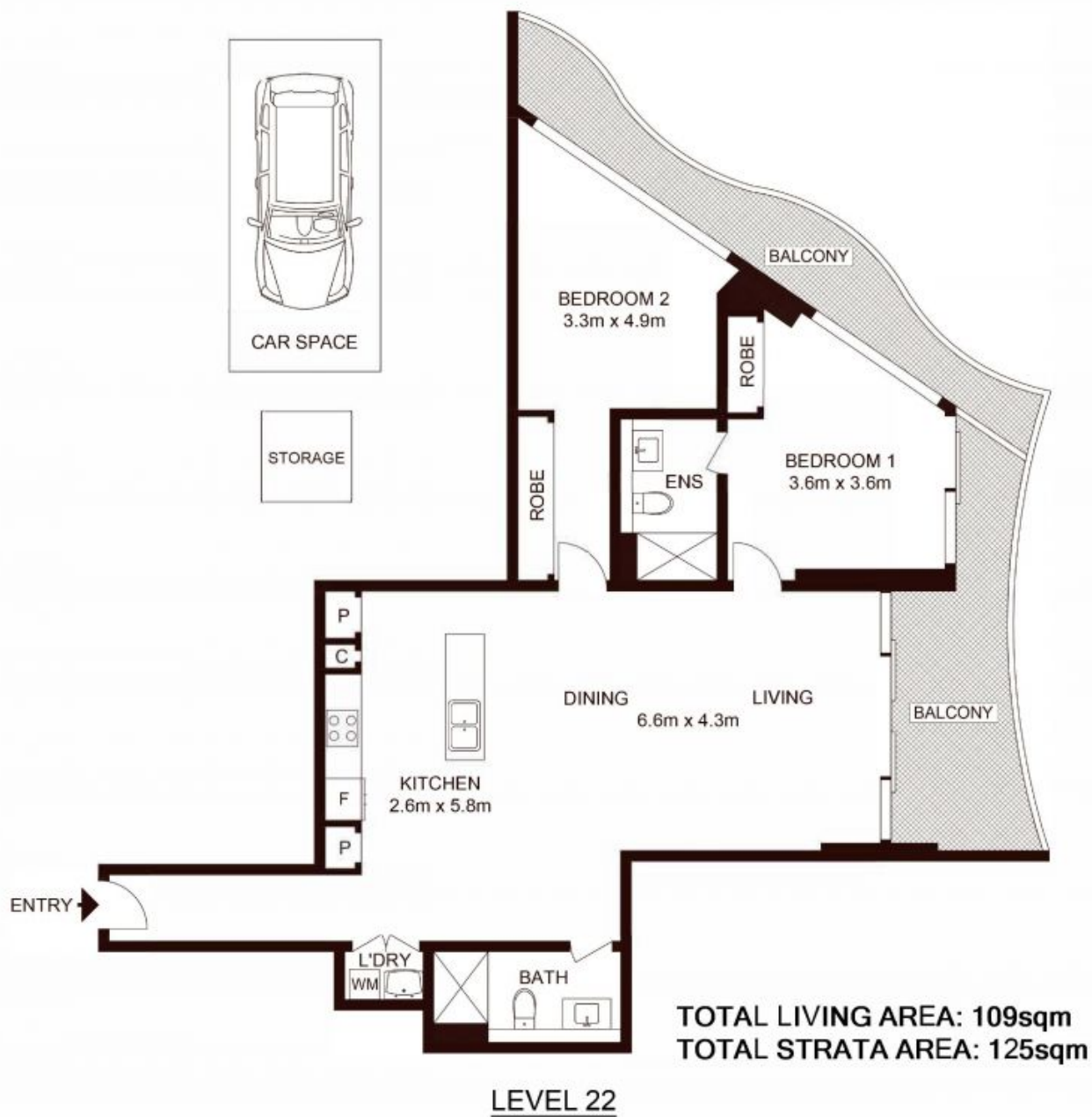
**Council Rates** : \$359.00 p/q  
**Water Rates** : \$290.95 p/q  
**Strata Rates** : \$1,861.75 p/q

**Jeffrey Li**

0404 135 763

**Jeffrey Li**

0404 135 763



2209/500 Pacific Highway, ST LEONARDS

Not to scale • All measurements are approximate • Drawn for marketing purposes only • Floorplan by © Xorix Media

