



2608/472 Pacific Highway St Leonards, NSW



## Sun Drenched North-East delight by Mirvac

Designed for immaculate contemporary living and open plan in/outdoor entertaining, this high level northeast facing apartment boasts enviable resort-style living in the new 'St Leonards Square building. Quality appointments ensure there's nothing to spend and everything to enjoy. The building promotes an active lifestyle with a shared indoor lap pool, gym, spa, sauna, function rooms and terrace.

### Home Features:

- Open plan kitchen, living/dining flow to covered balcony
- Stone bench tops and gas stainless steel Miele appliances
- Generous bedrooms with built-in robes, one with an ensuite
- Internal laundry, ducted air conditioning, security entrance
- Stroll to the heart of Crows Nest village eateries and nightlife

**\$1,650,000**

**Type** : Unit  
**Sold Date** : Thursday, 14th September 2023  
**Land** : 93 m2  
**Building Size** : 93 m2

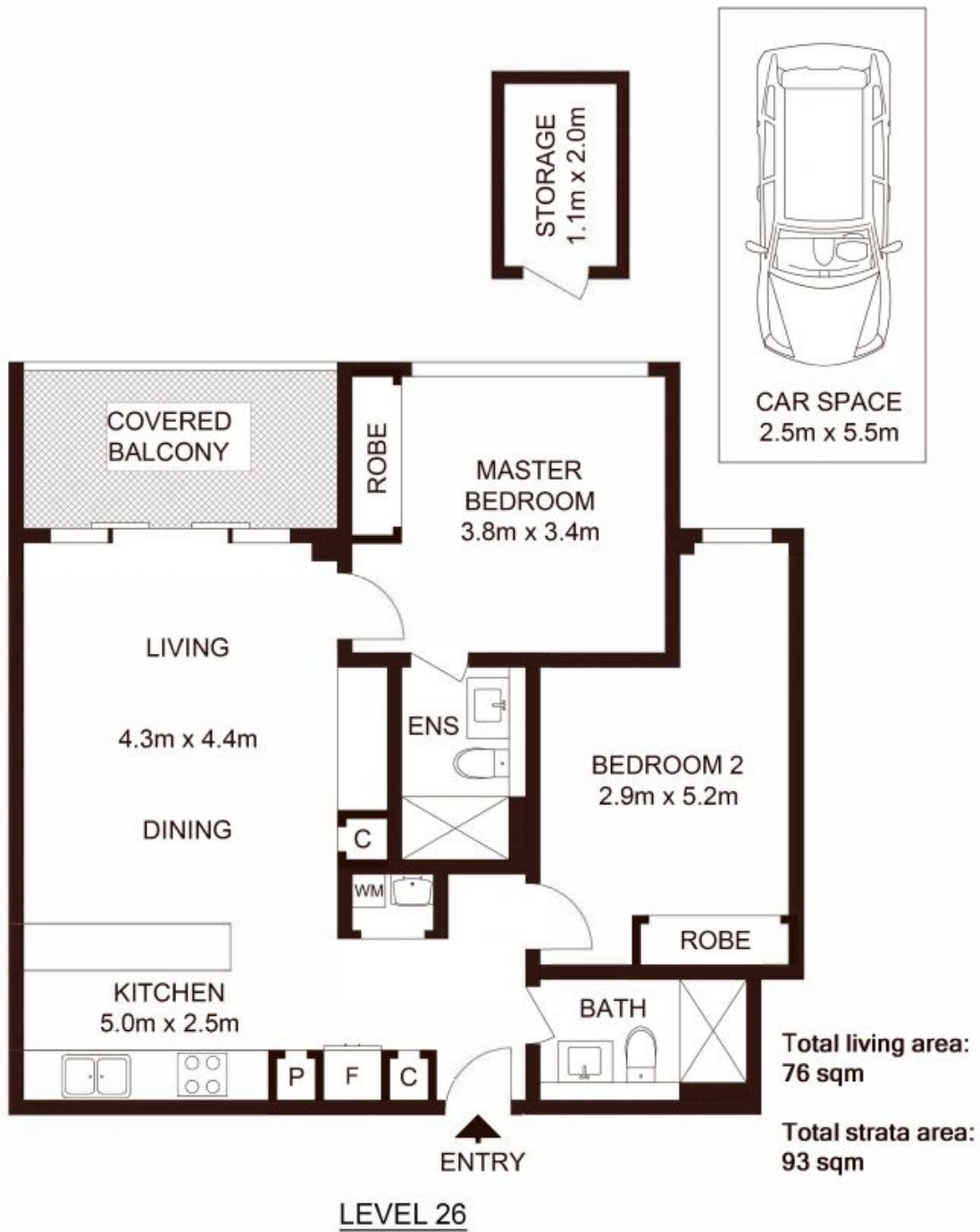
**Council Rates** : \$359.00 p/q  
**Water Rates** : \$160.00 p/q  
**Strata Rates** : \$1,635.12 p/q

**Jeffrey Li**

0404 135 763

**Faye Dai**

0423 677 160



## 2608/472 Pacific Highway, ST LEONARDS

Not to scale • All measurements are approximate • Drawn for marketing purposes only • Floorplan by © Xorix Media

