






1902/1 Sergeants Lane St Leonards, NSW

 3  
  2  
  2

## Resort-style living in the heart of St Leonards - Three bedrooms in the ever-pop

Located high on level 19 of the iconic Forum tower, this beautifully presented contemporary three-bedroom, two bathroom apartment features horizon views from Darling Harbour to the Blue Mountains, and spacious interiors with a practical, easy-living open-plan design.

### Features:

- Light-filled interiors, floor-to-ceiling glass windows in all rooms, iconic horizon views
- Expansive open-plan design flowing to wraparound balcony
- Generous proportions throughout offer family-sized accommodation

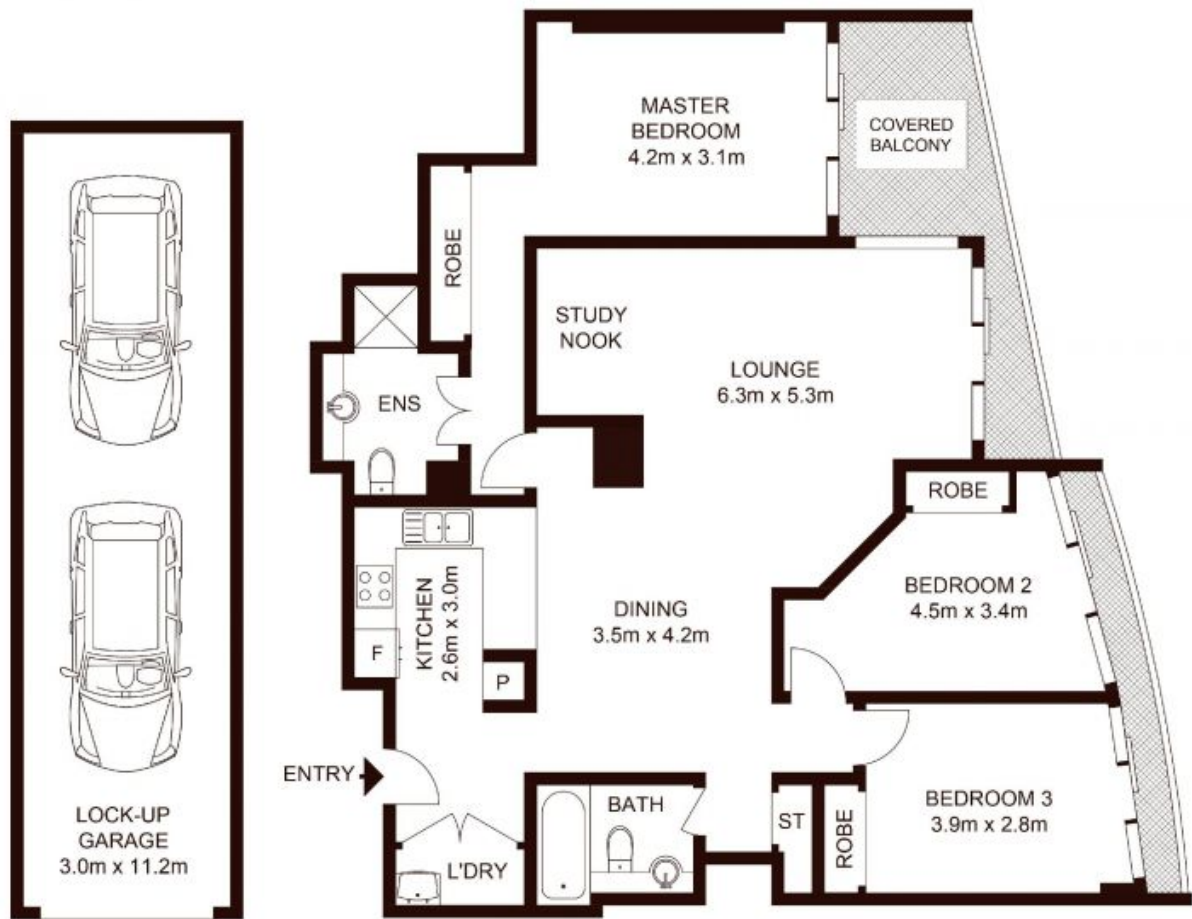
## Contact Agent

**Type** : Apartment  
**Sold Date** : Monday, 18th September 2023

**Council Rates** : \$359.00 p/q  
**Water Rates** : \$158.45 p/q  
**Strata Rates** : \$1,628.26 p/q

**Jeffrey Li**  
 0404 135 763

**Faye Dai**  
 0423 677 160



LEVEL 19

TOTAL LIVING AREA: 119m<sup>2</sup>

TOTAL STRATA AREA: 155m<sup>2</sup>

1902/1 Sergeant Lane, ST LEONARDS

Not to scale • All measurements are approximate • Drawn for marketing purposes only • Floorplan by © Xorix Media

