






Lot 9/16A Park Crescent Pymble, NSW

 4
  3
  2

## No more inspections !!- Brand new luxury 4 bedrooms & 4 levels Townhouse for ren

Large 4 bedrooms townhouse with large rumpus room to serve as a gym, private retreat area or extra lounge room. Residents are able to access every level from the garage to the main bedroom on the top floor via the private lift.

- Separate living room, dining room and a entire floor as multi-purpose room, as well as a scenic view from the balcony
- Master bedroom comes with a spacious bathroom
- A spacious and secure double garage with storage
- A private internal lift for convenience and ease
- A short walk to the Pymble train station, bus station, schools, and the village.

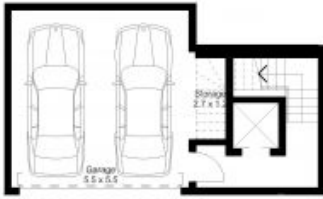
Leased \$1,300 pw

**Type** : Townhouse

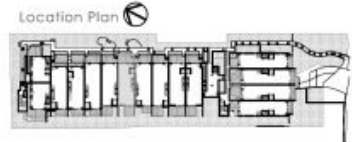
**Date Available** : Tuesday, 12th September 2023

**Tiffany Or**

0455582288



GARAGE



LOWER GROUND FLOOR



GROUND FLOOR PLAN



FIRST FLOOR PLAN



SECOND FLOOR PLAN

Floor Plan Townhouse 09  
4 Bedrooms

Area

Indoor Floor Area	272m <sup>2</sup>
Ground Level	60m <sup>2</sup>
First Level	54m <sup>2</sup>
Second Level	33m <sup>2</sup>
Multi-Purpose	85m <sup>2</sup>
Storage & Garage	38m <sup>2</sup>
Outdoor Floor Area	30m <sup>2</sup>
Balcony	7m <sup>2</sup>
Courtyard	23m <sup>2</sup>
Total Area	302m <sup>2</sup>

Areas are calculated from the internal face of the external wall and include any private space.

ELISIAN

GGA

GELDER GROUP  
ARCHITECTS

DISCLAIMER: All images, views and diagrams are indicative or artists' impressions only. Purchasers should check the plans and specifications included in the terms of the contract of sale.