

2609/486 Pacific Highway St Leonards NSW

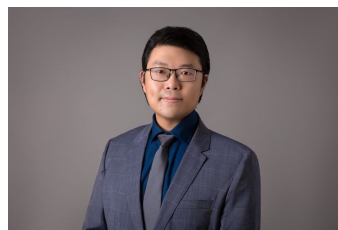
2 🏠 2 🚿 1 🚗

Situated on the 26th floor of the Jackson Building, this Mirvac built corner apartment provides a luxury sky home lifestyle central to St Leonards train station and the heart of vibrant Crows Nest.

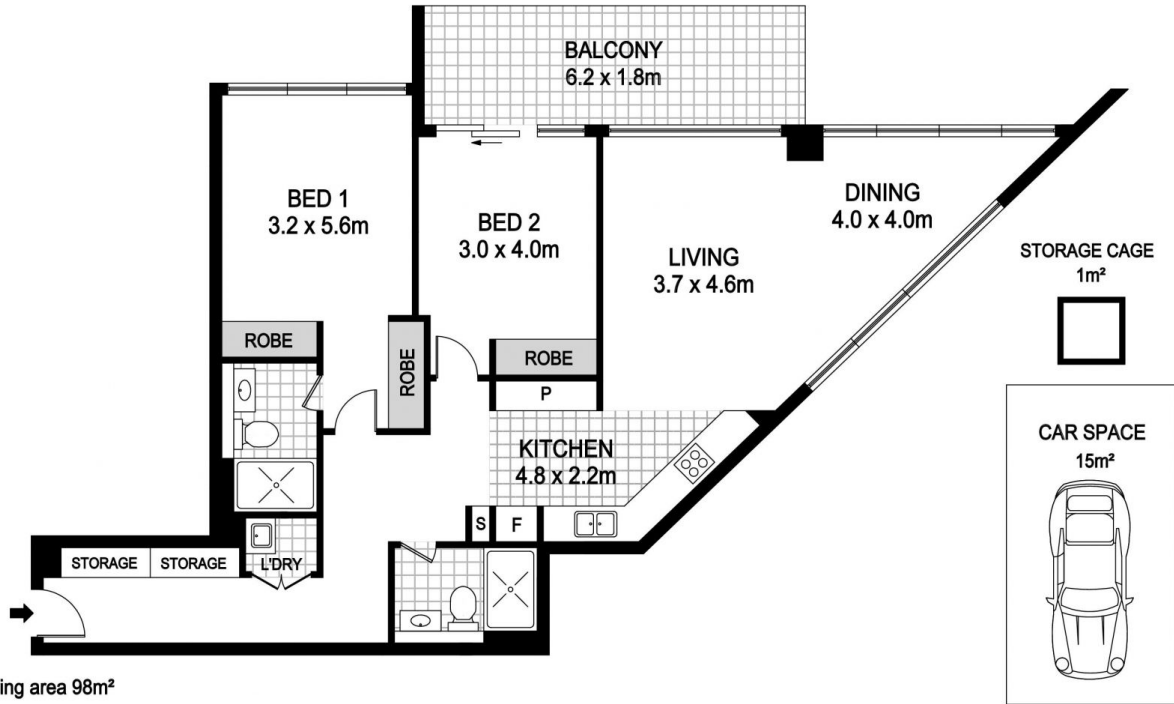
The corner position provides a sun-drenched northeast aspect that enjoys expansive district views and plenty of ventilation; one of Mirvac's best Resort-style facilities completes the picture of utter luxury.

Come position layout with a house like long entrance hall, multi-purpose kitchen and spacious living/dining flowing out Stone benchtops, gas Miele appliances plus dishwasher Bedrooms with built-ins, fully tiled bathrooms plus laundry Ducted air conditioning, secure parking with lift access indoor pool, spa, sauna, steam room and bbq area minutes to new St Leonards plaza crows nest metro and train station.

Building Size : 98 sqm
Land Size : 114 sqm
View : <https://www.midlandgroup.com.au/7632>
 834



Leo Guo
0420488278



Total living area 98m²

Total Strata area 114m²

2609/486 PACIFIC HIGHWAY, ST LEONARDS



DISCLAIMER : PLANS SHOWN ARE FOR MARKETING PURPOSES ONLY. ALL DIMENSIONS ARE APPROXIMATE AND NOT TO SCALE. THEY ARE SUBJECT TO ERRORS AND INACCURACIES AND NO LIABILITY WILL BE ACCEPTED. INTERESTED PARTIES SHOULD MAKE THEIR OWN INQUIRES.

