



3201/88A Christie Street St Leonards, NSW

 3  
  3  
  1

## High level Spacious Three bedroom with Double Balcony

With unmatched amenities, superior luxury and immersive design, this landmark building has all you want. Capturing spectacular district views, encompassing the city skyline, Sydney Harbour Bridge and Sydney Harbour, this luxury apartment in 'Eighty Eight' has been crafted to deliver lavish urban living.

### Apartment Features:

- Largest three-bedroom type on the floor with two separate balconies
- Spacious open plan living and all three bedrooms enjoying harbour view and district views
- Penthouse finishes with custom made wall paper throughout
- Samsung smart lock
- Reverse cycle heating and cooling
- Positioned on top of "Mall 88" and connection to St Leonards train station public tran

## Contact agent

**Type** : Apartment  
**Sold Date** : Thursday, 5th October 2023  
**Land** : 170 m2  
**Building Size** : 149 m2

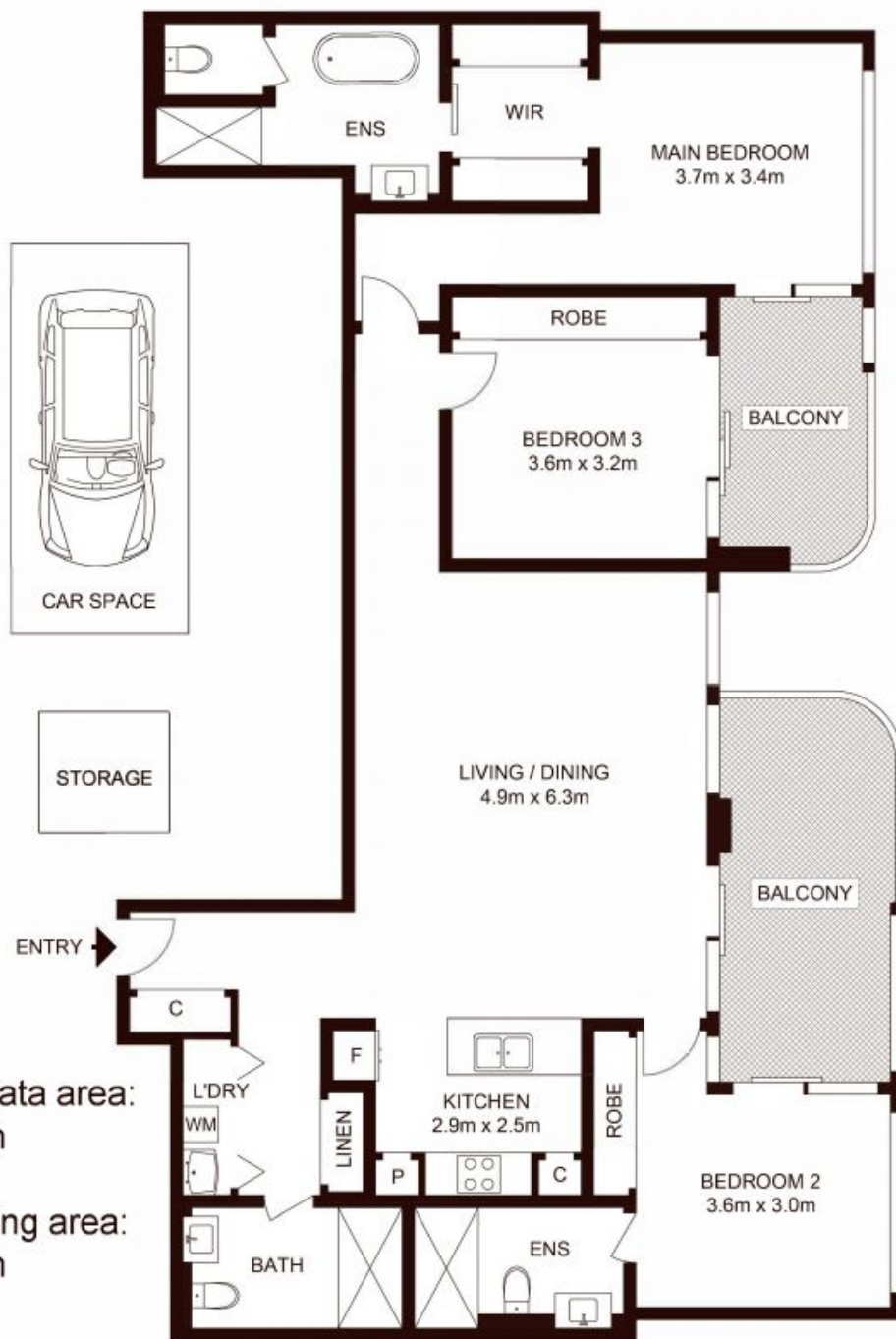
**Strata Rates** : \$2,599.55 p/q

**Jeffrey Li**

0404 135 763

**Faye Dai**

0423 677 160



Total strata area:  
170 sqm

Total living area:  
146 sqm

**LEVEL 32**

3201/88A Christie Street, ST LEONARDS

Not to scale • All measurements are approximate • Drawn for marketing purposes only • Floorplan by © Xorix Media

