



1708/500 Pacific Highway St Leonards, NSW



1



1

Available on July - Luxury Apartment with Premium Amenities and fully furnished

*Fully furnished *1 bed plus study area

Spectacular one-bedroom apartment boasting flawless design and convenience, set within "The Landmark", a prominent Northshore landmark building boasting an unsurpassed location epitomizing harborside living and comfort. Just doorsteps to cafes, Restaurants, and shops. Short walking distance to the new Metro provides many options for every journey, from Chatswood to Crows Nest to the CBD, Martin Place, and Barangaroo.

Apartment features:

- Generous and fluid living/dining areas plus a built-in study space
- Lift access to a separate storage

leased

Type : Apartment

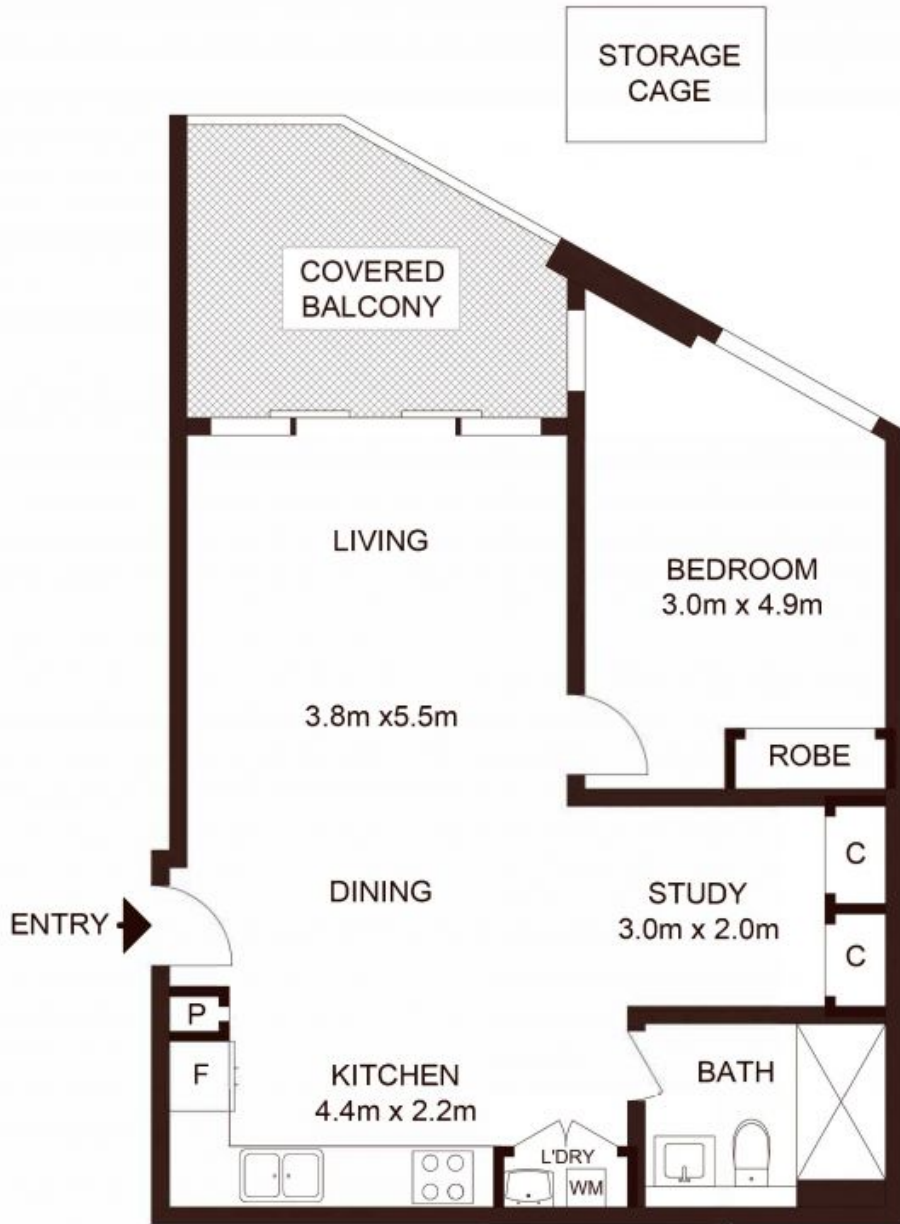
Date Available : Monday, 10th July 2023

Land : 67 m2

Building Size : 65 m2

Tiffany Or

0455582288



LEVEL 15

Total Strata Area: 67sqm
Total Living area: 65sqm

1508/500 Pacific Highway, ST LEONARDS

Not to scale • All measurements are approximate • Drawn for marketing purposes only • Floorplan by © Xorix Media

