



2207/486 Pacific Highway St Leonards, NSW

 2
  2
  1

## Sleek contemporary living in a luxurious resort-style building

\*Unfurnished\*

St Leonards Square exemplifies Mirvac's reputation for sophisticated living in Sydney with superb amenities, walking distance to rail, future Crows Nest Metro and a brand new St Leonards Shopping Plaza.

### Home Features:

- ? Open plan kitchen, living/dining flow to covered balcony
- ? Stone bench tops and gas stainless steel Miele appliances
- ? Generous bedrooms with built-in robes, one with an ensuite
- ? Stylish fully tiled bathrooms

There are 29 visitor spaces, 14 car share spaces, and 18 electronic car charging bays. Res

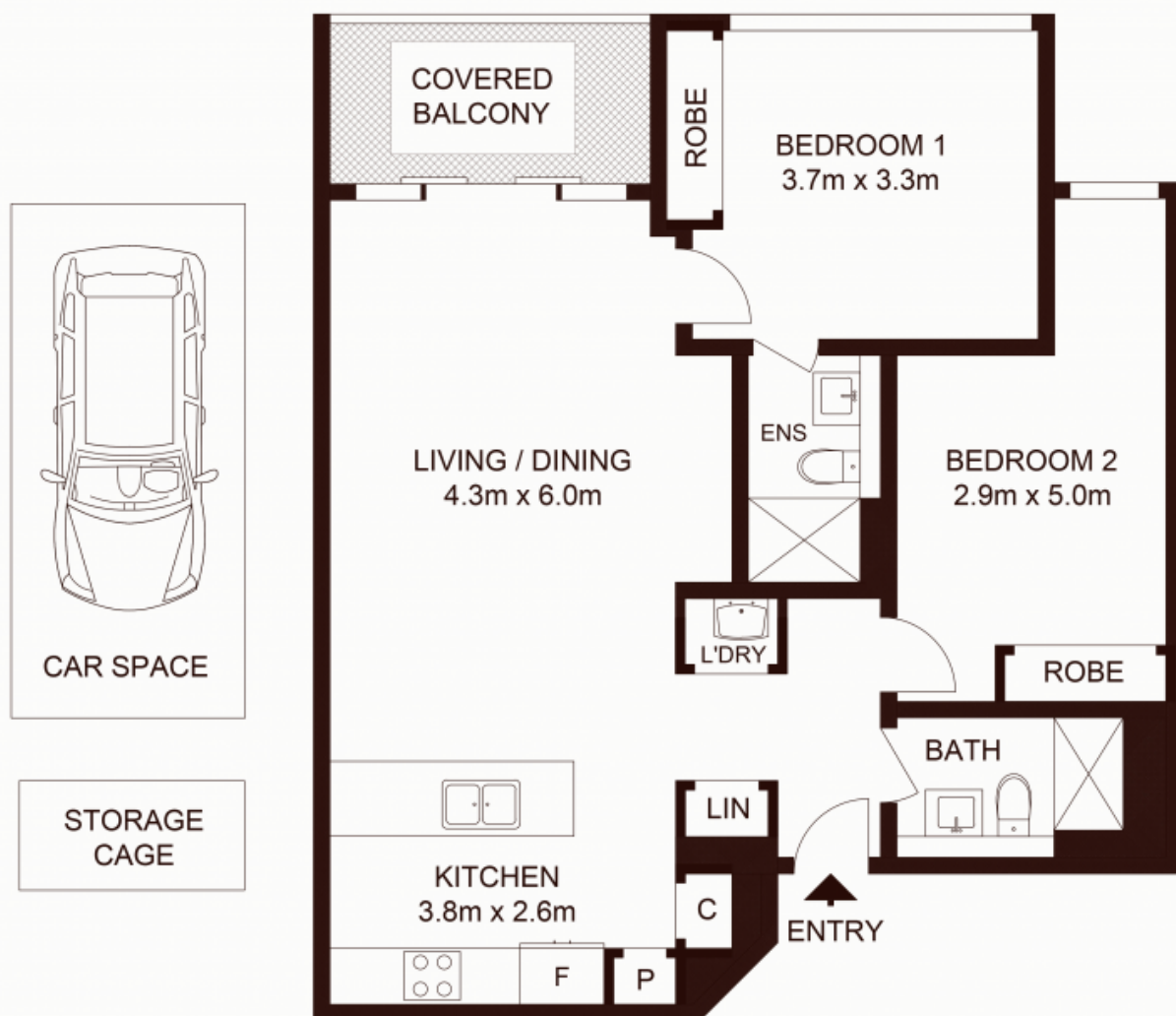
## Leased

**Type** : Apartment

**Date Available** : Monday, 3rd July 2023

**Tiffany Or**

0455582288



LEVEL 22

TOTAL STRATA AREA : 100m<sup>2</sup>  
TOTAL LIVING AREA : 83m<sup>2</sup>

2207/486 Pacific Hallway, ST LEONARDS

Not to scale • All measurements are approximate • Drawn for marketing purposes only • Floorplan by © Xorix Media

