




1905/486 Pacific Highway St Leonards, NSW

 2
  2
  1

Harbour facing two bedroom in Mirvac built complex

With sweeping city views that claim the Harbour Bridge as its centrepiece, this apartment promises a lifestyle of sophistication in the resort-style 'St Leonards Square' building. Pure indulgence offers floor-to-ceiling windows, a versatile floor plan, and sweeping views of Sydney Harbour and its surroundings.

Home Features:

- Floor-to-ceiling glass windows with dazzling day/night views
- Two storage cages, one in the car park basement and another one conveniently located on level 19 residential level
- Modern island kitchen with stone benchtop and built-in Miele appliances

There are 29 visitor spaces, 14 car-share spaces, and 18 electronic car charging bays. Res

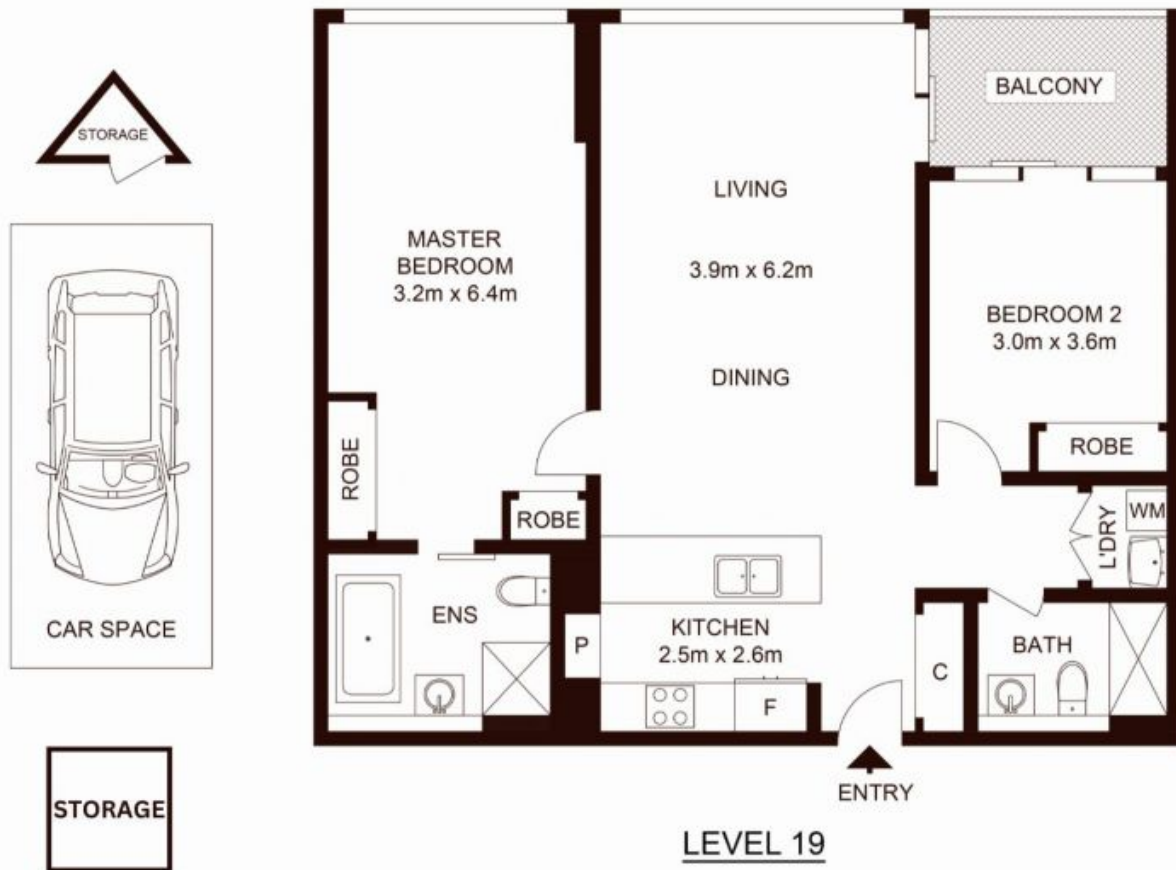
Contact Agent

Type : Apartment
Sold Date : Monday, 25th March 2024

Council Rates : \$359.00 p/q
Water Rates : \$242.55 p/q
Strata Rates : \$1,542.45 p/q

Jeffrey Li
 0404 135 763

Faye Dai
 0423 677 160



TOTAL LIVING AREA : 89sqm
TOTAL STRATA AREA : 106sqm

1905/486 Pacific Highway, ST LEONARDS

Not to scale • All measurements are approximate • Drawn for marketing purposes only • Floorplan by © Xorix Media

