



1508/500 Pacific Highway St Leonards, NSW



1



1

Luxury Apartment with Premium Amenities and Convenience

Spectacular one-bedroom apartment boasting flawless design and convenience, set within "The Landmark", a prominent Northshore landmark building boasting an unsurpassed location epitomizing harborside living and comfort. Just doorsteps to cafes, Restaurants, and shops. Short walking distance to the new Metro provides many options for every journey, from Chatswood to Crows Nest to the CBD, Martin Place, and Barangaroo.

Apartment features:

- Generous and fluid living/dining areas plus a built-in study space
- Living room flows to the east, allowing an abundance of light
- Stone-topped gas kitchen with quality integrated European appliances
- Lift access to a separate storage

\$875,000

Type : Apartment
Sold Date : Tuesday, 18th July 2023
Land : 67 m2
Building Size : 65 m2

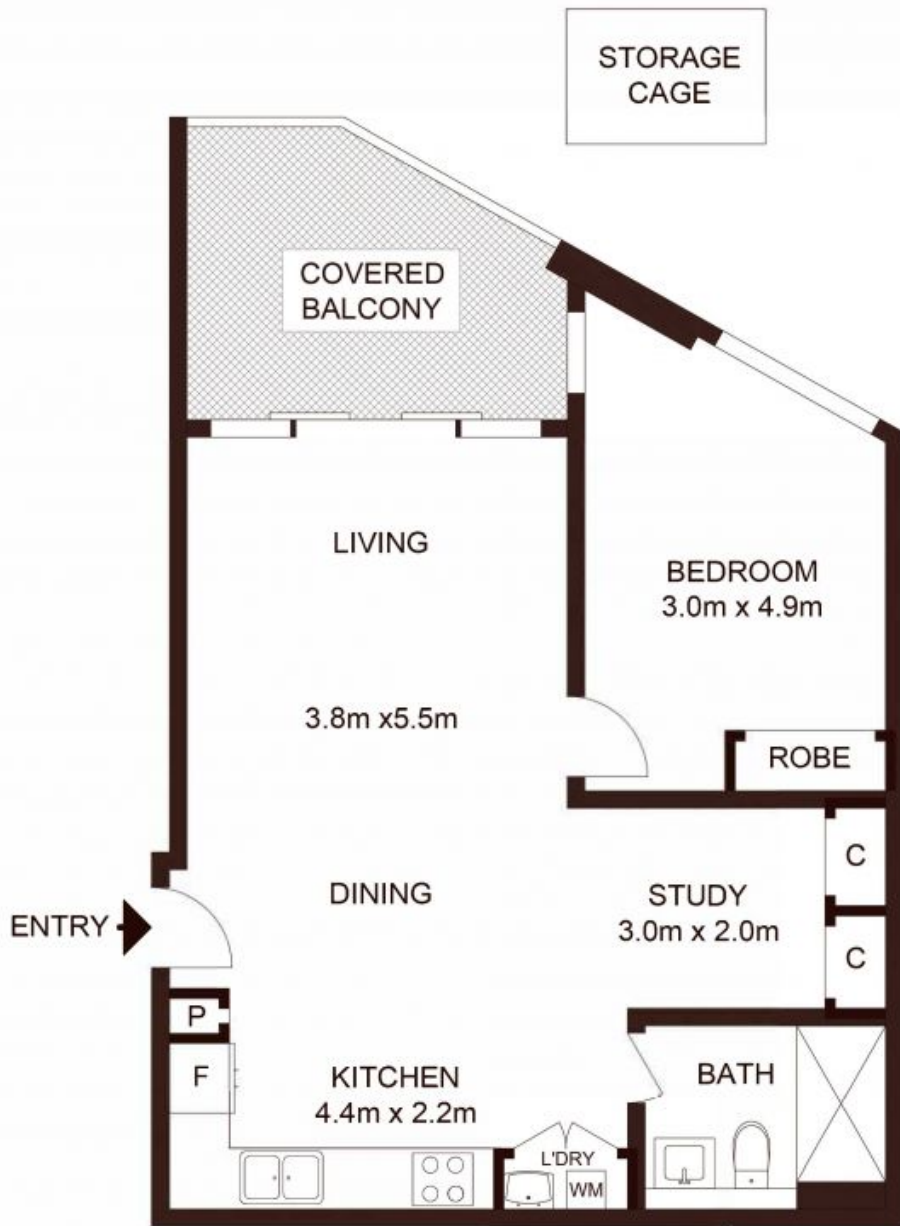
Council Rates : \$359.00 p/q
Water Rates : \$156.70 p/q
Strata Rates : \$1,034.30 p/q

Jeffrey Li

0404 135 763

Faye Dai

0423 677 160



LEVEL 15

Total Strata Area: 67sqm
Total Living area: 65sqm

1508/500 Pacific Highway, ST LEONARDS

Not to scale • All measurements are approximate • Drawn for marketing purposes only • Floorplan by © Xorix Media

