






702/567 Pacific Highway St Leonards, NSW

 3
  2
  2

Sun Drenched designer apartment in the perfect location

Located in the boutique "Northern Light" complex with only 28 apartments, this executive level 7 three-bedroom with two parking is just a stone's throw away from the centre of St Leonards and an easy walking distance to the vibrant restaurants, boutiques and bars of Crows Nest.

Key features:

- Rear of the block located on the second highest floor- seventh floor, facing the quiet laneway
- Huge Open-plan living area with a sun-drenched winter garden that extends into the living room.
- Full island gas kitchen with stone island bench and SMEG appliances

\$1,700,000

Type : Unit
Sold Date : Monday, 1st May 2023
Land : 148 m2
Building Size : 148 m2

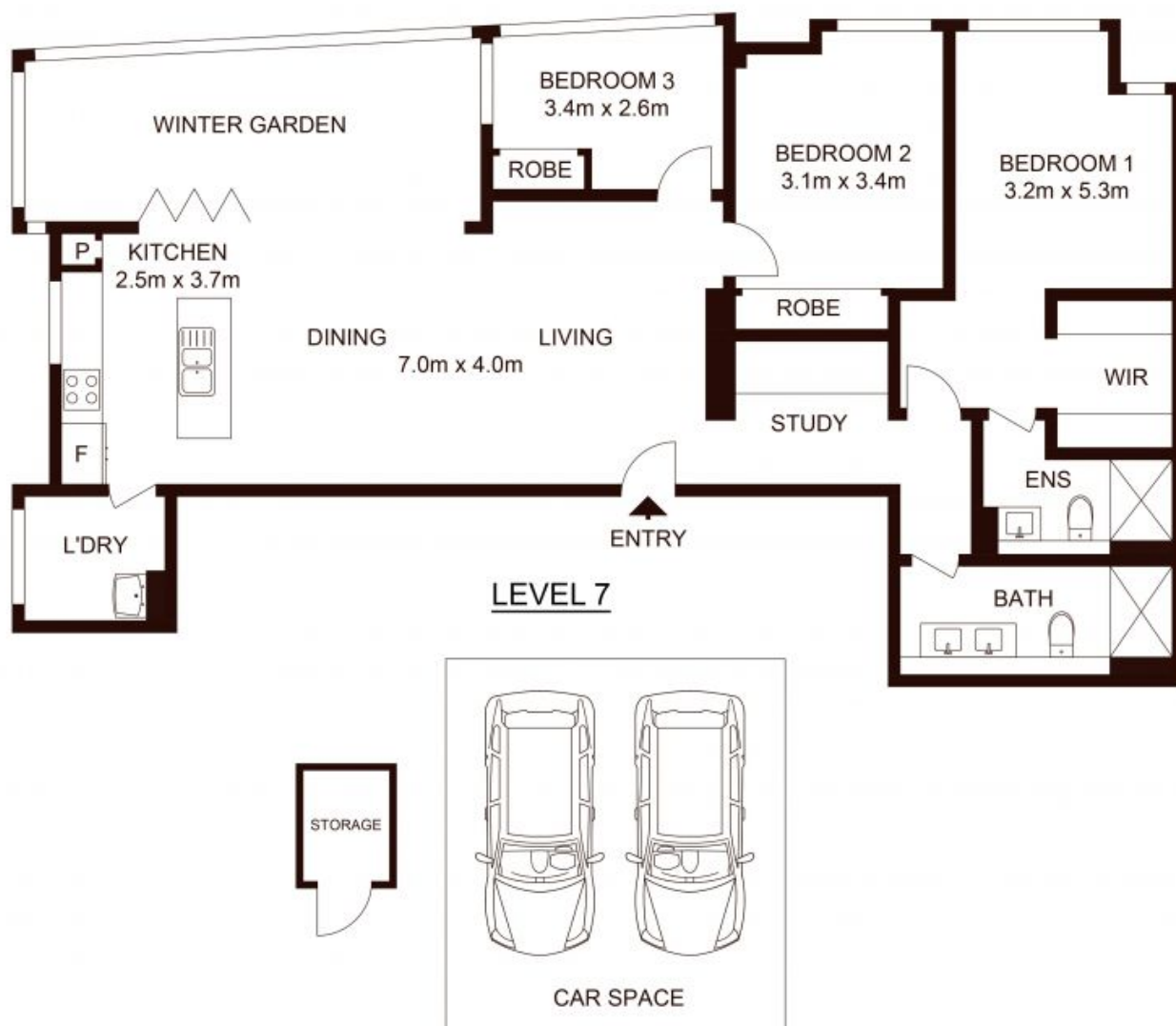
Council Rates : \$296.00 p/q
Water Rates : \$165.02 p/q
Strata Rates : \$1,575.00 p/q

Jeffrey Li

0404 135 763

Faye Dai

0423 677 160



TOTAL STRATA AREA :148m²
 TOTAL LIVING AREA :119m²

702/567 Pacific Highway, ST LEONARDS

Not to scale • All measurements are approximate • Drawn for marketing purposes only • Floorplan by © Xorix Media

