



1515/500 Pacific Highway St Leonards, NSW



1



1

## High Quality STUDIO in Presitge Landmark

\* NO FURNITURE \*

A new Lifestyle, over 1,000m2 of amenities designed to enhance your living.

Luxurious residences with expansive entertaining spaces offering spectacular views stretching from Sydney Harbour across the North Shore to Middle Harbour. Open floor plan and high-end finishes creating a modern look. Floor to ceiling thermal glass windows, large balconies, and kitted out kitchens with Miele appliances in spacious apartments with study/media areas.

Club 500, residents will enjoy an array of resort-style services and amenities.

- ? Lap pool
- ? Private Spa

## Deposit taken!

**Type** : Apartment  
**Date Available** : Tuesday, 25th April 2023  
**Land** : 49 m2  
**Building Size** : 42 m2

**Tiffany Or**  
 0455582288

**Faye Dai**  
 0423 677 160

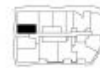


F Fridge  
L Laundry  
P Pantry  
ST Storage  
W Wardrobe

Apartment Type  
Bathrooms 1 Bath  
Internal 42 m<sup>2</sup>  
External 0 m<sup>2</sup>  
Parking -

THE  
LANDMARK

*Sculpted from Sydney*



Studio Apartment  
Type C

Disclaimer: Colliers International does not guarantee, warrant or represent that the information contained in this advertising and marketing document is correct. Any interested parties should make their own enquiries as to the accuracy of this information. We exclude all implied or implied terms, conditions and warranties arising out of this document and any liability for loss or damage arising there from.