



1204/88A Christie Street St Leonards, NSW

 2
  2
  1

Resort-style luxury two bedroom on top of 'Mall 88'

Situated in the heart of St Leonards on top of 'Mall 88', this property is close to parks, bus and rail transport, gyms, and an easy stroll to "Crows nest village" with its restaurants, cafes, boutiques, swimming pools, and wonderful lower north shore lifestyle.

Unmatched amenity, superior luxury and immersive design, this landmark building has all you want. Opulent interiors offer a selection of brass, stone and timber all beautifully threaded together with unique detail.

Apartment Features:

- Superbly designed by award winning-architects PTW
- Samsung smart lock

\$1,465,000

Type : Apartment
Sold Date : Monday, 1st May 2023
Land : 105 m2

Council Rates : \$352.00 p/q
Water Rates : \$198.20 p/q
Strata Rates : \$1,400.00 p/q

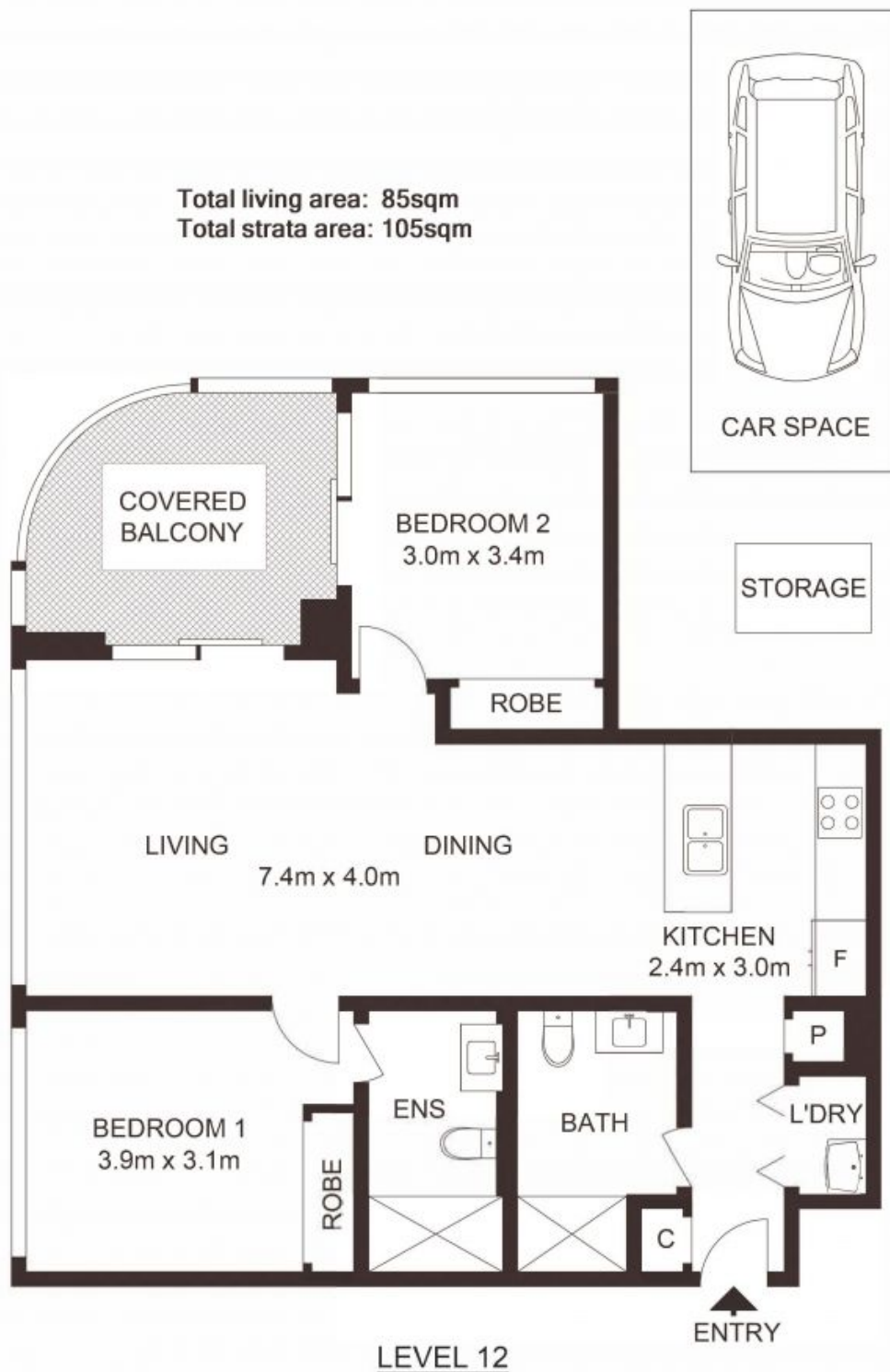
Jeffrey Li

0404 135 763

Faye Dai

0423 677 160

Total living area: 85sqm
Total strata area: 105sqm



1204/88A Christie Street, ST LEONARDS

Not to scale • All measurements are approximate • Drawn for marketing purposes only • Floorplan by © Xorix Media

