

2802/500 Pacific Highway St Leonards, NSW

 2
  2
  1

Double Storey Sky Home in Prestige St Leonards Landmark - One of a kind!

This spectacular 2.5 bedroom is situated on two levels with separate balconies boasting flawless design and convenience. With a sizeable 157sqm living area on title, you could find only a few in the Northshore.

Apartment Highlights:

- * Enjoy a harmonious connection with the height and mesmerizing north-facing vistas towards Northhead and across to the Lower North Shore.
- * Offering a generous 174 sqm on the title (including one parking)
- * Expansive, open-plan living and dining with custom entire wall built-in cabinetry on both levels opening out to a substantial, covered north-facing balcony.
- * Luxury hot/cold filtered zip water tap on two levels

DEPOSIT TAKEN \$1500 per week!

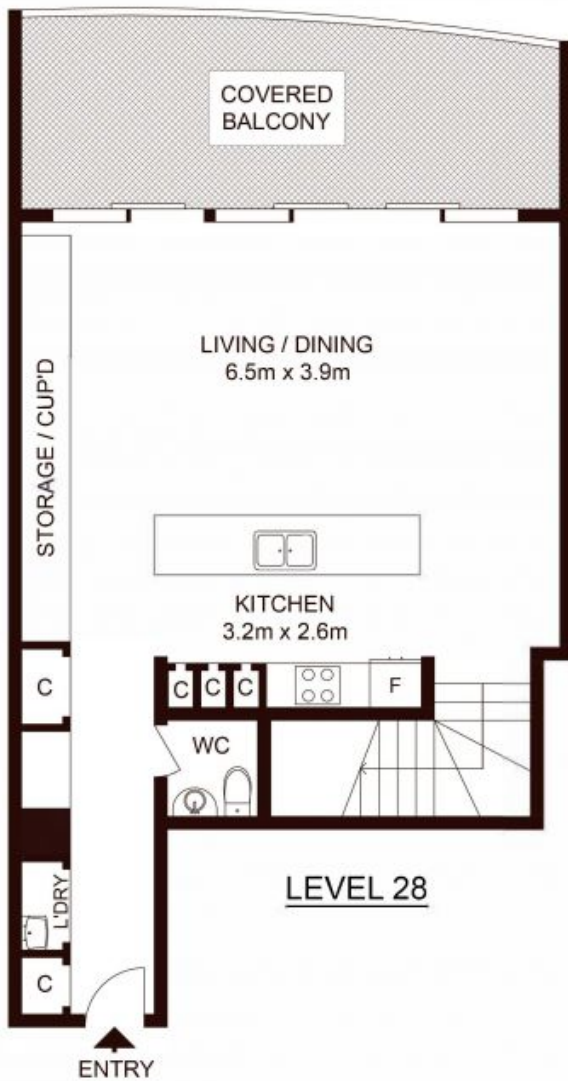
Type : Apartment
Date Available : Tuesday, 9th May 2023
Land : 174 m2
Building Size : 158 m2

Faye Dai

0423 677 160

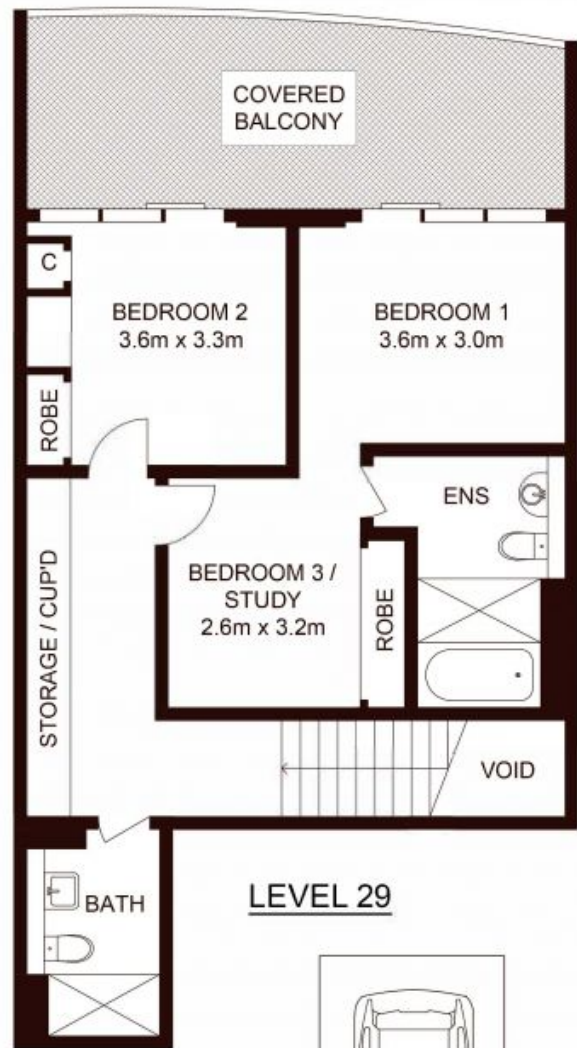
Tiffany Or

0455582288



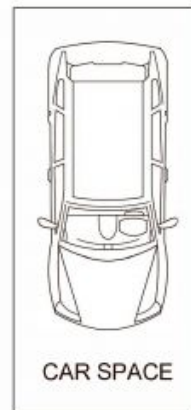
LEVEL 28

Total Strata Area: 174sqm
Total Living Area: 158sqm



LEVEL 29

STORAGE



2802/500 Pacific Highway, ST LEONARDS

Not to scale • All measurements are approximate • Drawn for marketing purposes only • Floorplan by © Xorix Media

