



2508/88A Christie Street St Leonards, NSW

 3
  2
  1

Harbour Views | High Level | Perfect Location

This high-level residence has been built with all areas facing amazing harbour views-level 25

Apartment Features:

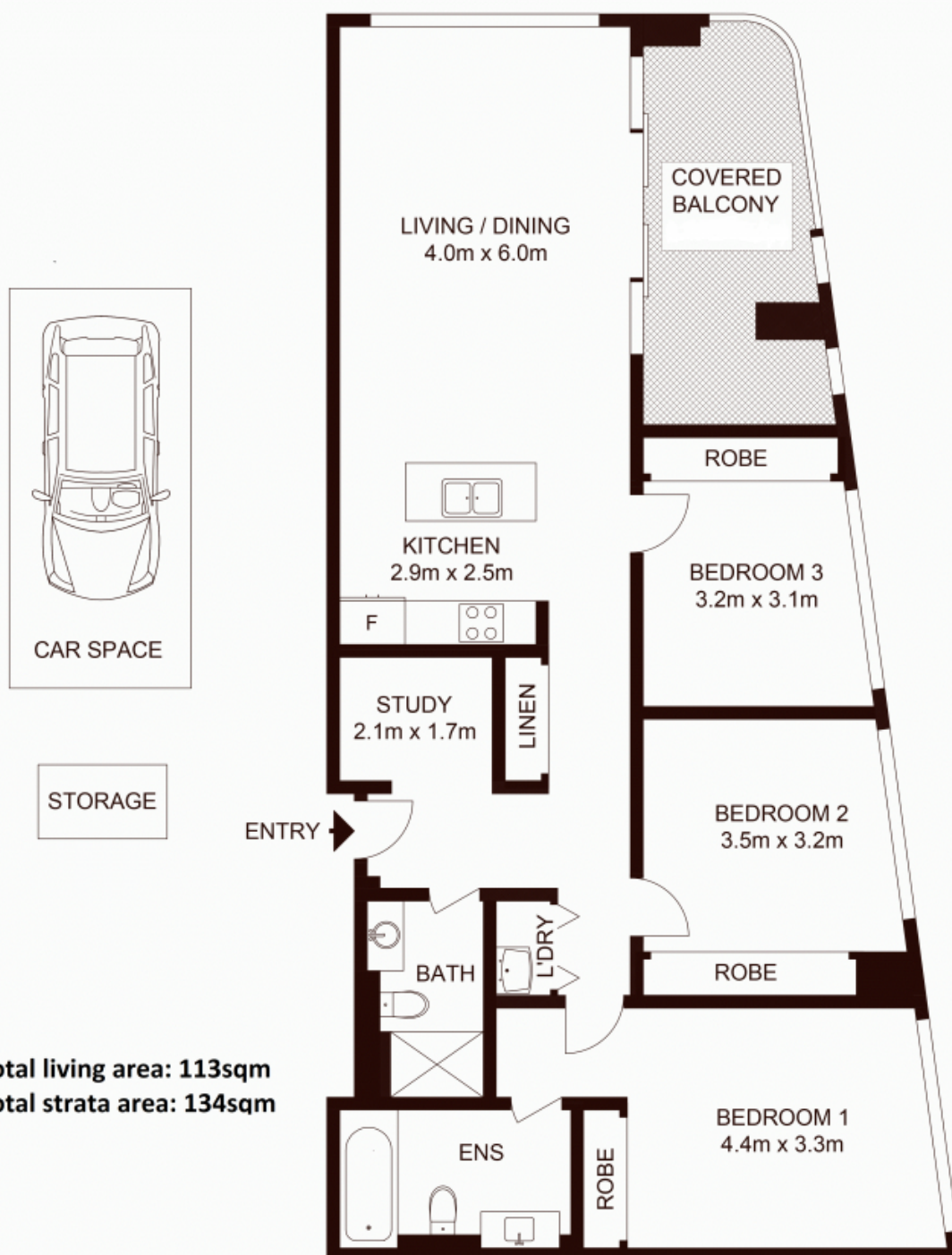
- Superbly designed by award winning-architects PTW
- Spacious open plan living and all three bedrooms enjoying harbour bridge
- Designer stone island bench with full stone splash-back. Integrated Fisher and Paykel fridge/freezer and Miele appliances
- Samsung smart lock
- Designer kitchen tap-ware and bathroom fully tiled
- Porcelain large tiled floors, high shadow-line ceilings for interior
- Single security car space, storage cage.
- Reverse cycle heating and cooling
- Positioned on top of "Mall 88" and connection to St Leonard's train station public tran

Type : Apartment
Sold Date : Friday, 4th August 2023

Council Rates : \$380.00 p/q
Water Rates : \$200.00 p/q
Strata Rates : \$1,750.00 p/q

Jeffrey Li
 0404 135 763

Faye Dai
 0423 677 160



Total living area: 113sqm
Total strata area: 134sqm

LEVEL 25

2508/88A Christie Street, ST LEONARDS

Not to scale • All measurements are approximate • Drawn for marketing purposes only • Floorplan by © Xorix Media

