



1107/500 Pacific Highway St Leonards, NSW



## Sundrenched North East facing two bedroom in a premier lifestyle location

DEPOSIT TAKEN!

Leased for \$1,200 per week!

This near new built generously-sized two-bedroom apartment is situated on the 11th floor at a prime corner position that incorporates a north-east facing aspect with open-plan living leading out onto a massive entertainer balcony.

Home Features:

- Luxuriously appointed and finished to the highest standards
- Sun-drenched entertainment balcony
- Generous proportions featuring open plan living and dining areas with abundant natural light

## DEPOSIT TAKEN!

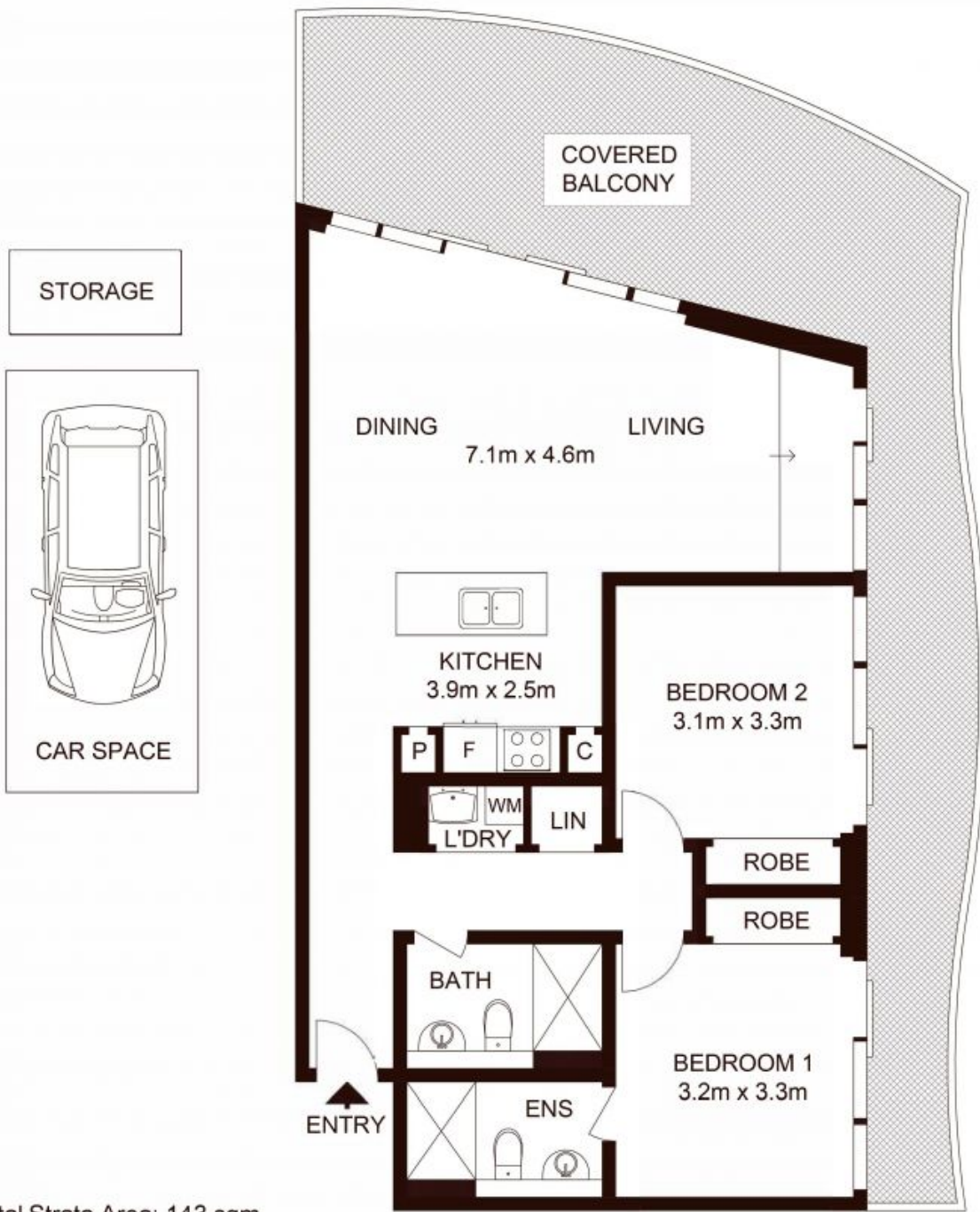
**Type** : Apartment  
**Date Available** : Tuesday, 21st March 2023  
**Land** : 143 m2  
**Building Size** : 123 m2

**Tiffany Or**

0455582288

**Li Guo**

0420488278



Total Strata Area: 143 sqm  
 Total Living Area: 123 sqm

LEVEL 11

1107/500 Pacific Highway, ST LEONARDS

Not to scale • All measurements are approximate • Drawn for marketing purposes only • Floorplan by © Xorix Media

